

POLEN RESUMEN GRÁFICO SEMANAL

ALICANTE

L M X J V S D
14 15 16 17 18 19 20

Diciembre

2020

SEMANA

51

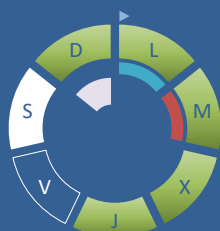
COLABORA

LETIPharma
desde 1919



ÁRBOLES

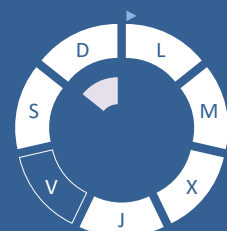
Cupres., Taxac.
(Cipreses, enebros)



Olea europaea
(Olivo)

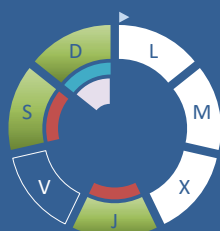


Platanus sp.
(Plátano de sombra)

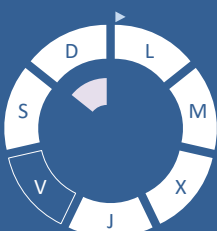


HIERBAS

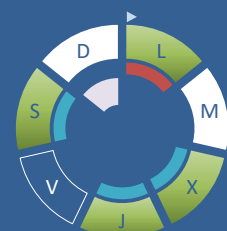
Amaranthaceae
(Cenizos, salsolas)



Poaceae
(Gramíneas)



Urticaceae
(Ortigas, parietarias)

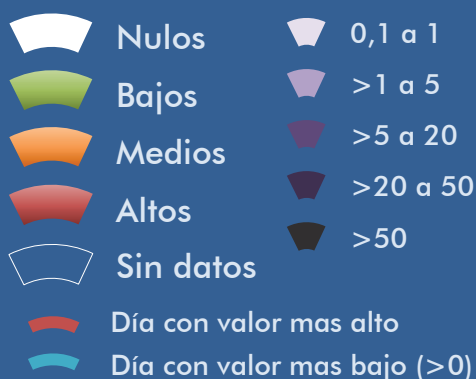


TIPOS POLÍNICOS PRINCIPALES

NIVELES

LLUVIA

Litros/m²



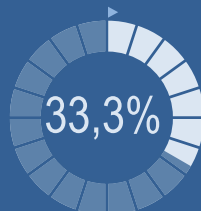
VARIACIÓN RESPECTO A LA SEMANA ANTERIOR



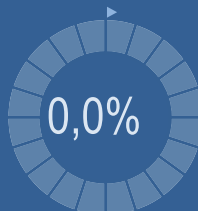
TIPOS POLÍNICOS PRINCIPALES EN PORCENTAJES



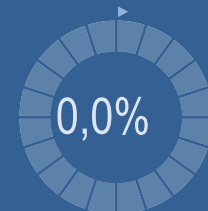
Cupres., Taxac.
(Cipreses, enebros)



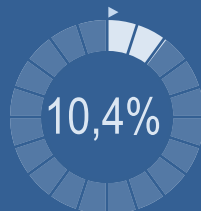
Olea europaea
(Olivo)



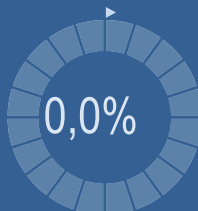
Platanus sp.
(Plátano de sombra)



Amaranthaceae
(Cenizos, salsolas)



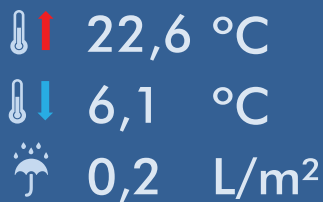
Poaceae
(Gramíneas)



Urticaceae
(Ortigas, parietarias)



METEOROLOGÍA



OTOÑO

POLEN DIARIO

Granos/m³



POLEN TOTAL

48

Granos/m³

SEMANA ANTERIOR	VARIACIÓN SEMANAL
172	-124

CAPTADOR:
Burkard
Spore Trap

INFORME:

Javier Suárez

REPRESENTACIÓN GRÁFICA

AÑO

SEMANA

PUNTO DE MUESTREO

COLABORA

TOTAL

2020

51

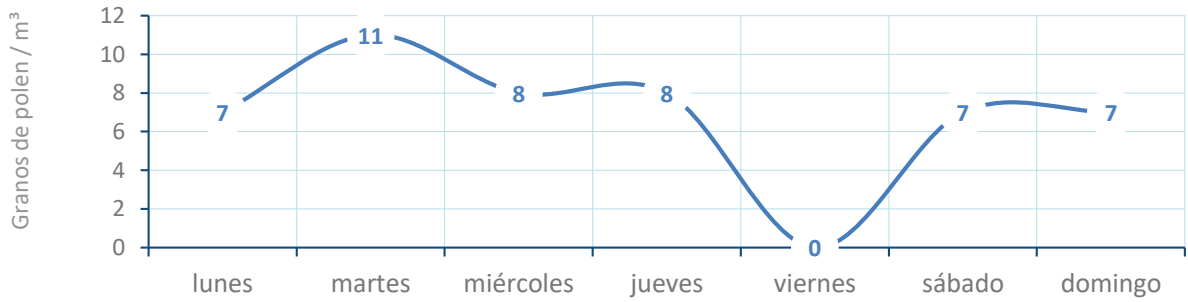
ALICANTE

LETIPharma
desde 1919

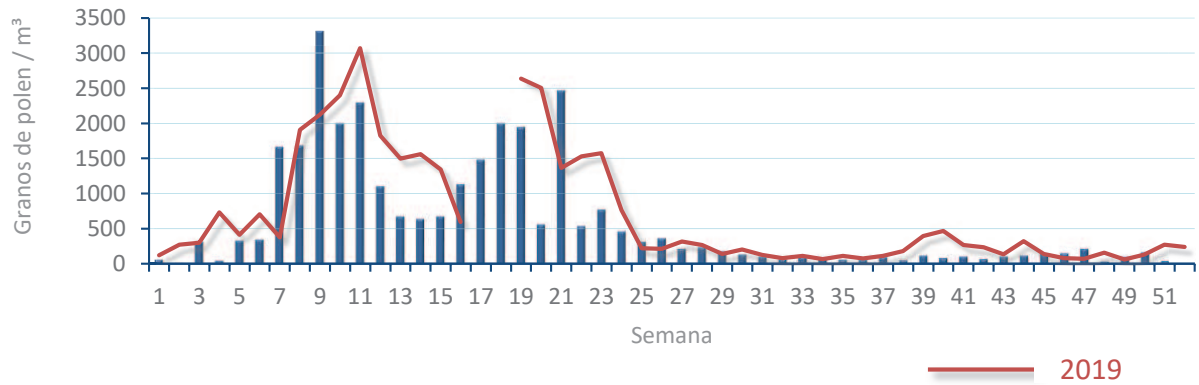
48
gn/m³

POLEN

NIVELES DE POLEN DE LA ÚLTIMA SEMANA

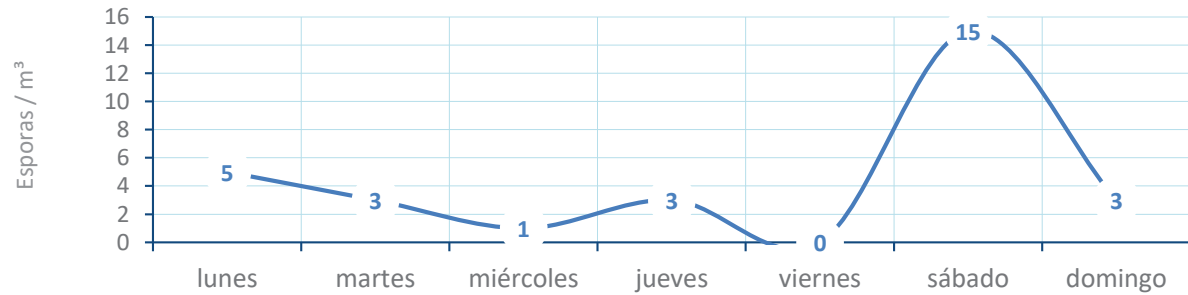


EVOLUCIÓN POLÍNICA SEMANAL

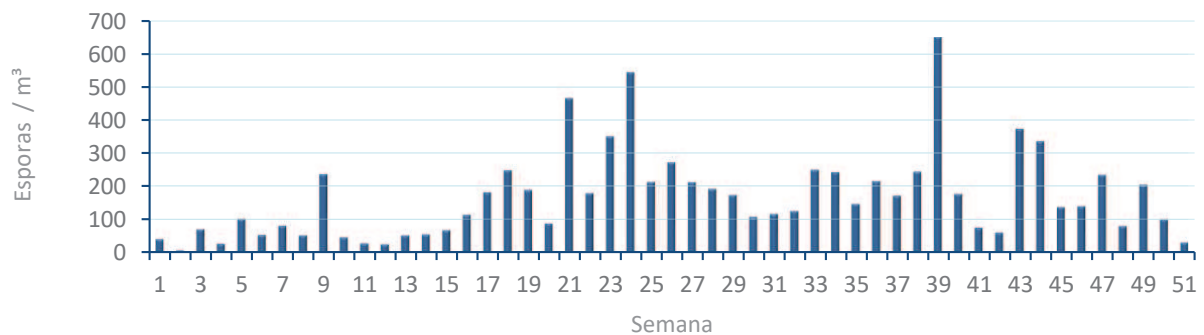


ALTERNARIA

NIVELES DE ALTERNARIA DE LA ÚLTIMA SEMANA



EVOLUCIÓN SEMANAL DE ALTERNARIA



COMPARACIÓN RESPECTO AL AÑO 2019

AÑO

SEMANA

PUNTO DE MUESTREO

COLABORA

AÑOS

2020

51

ALICANTE

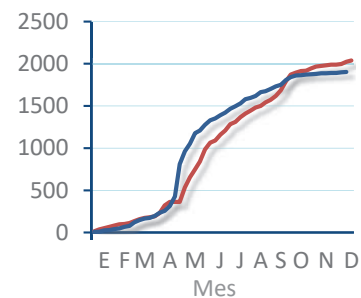
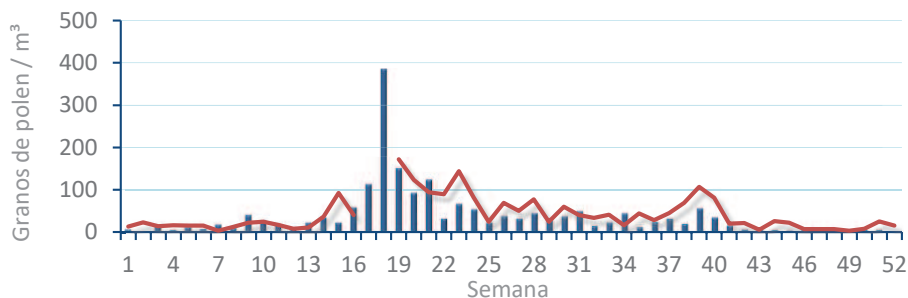


TIPOS

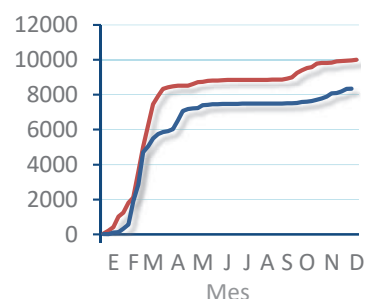
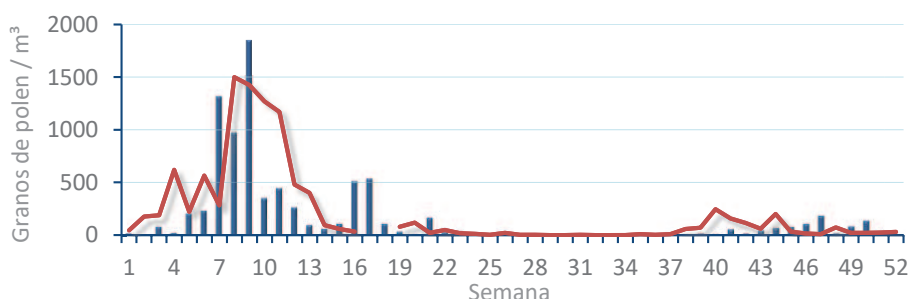
EVOLUCIÓN SEMANAL

DATOS AGRUPADOS

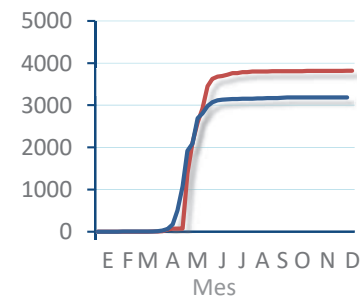
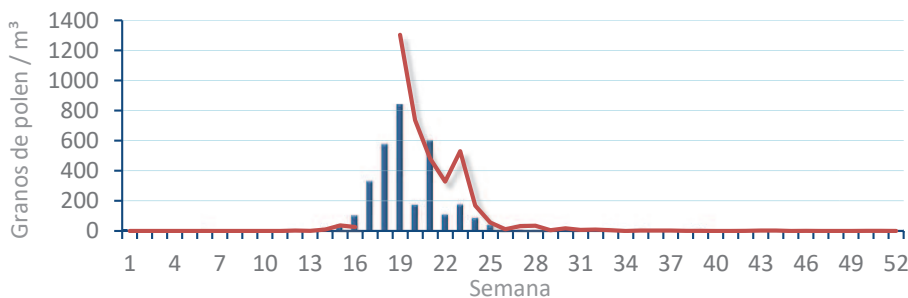
Amaranthaceae
(Cenizo, salsola)



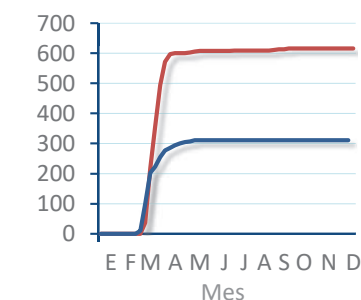
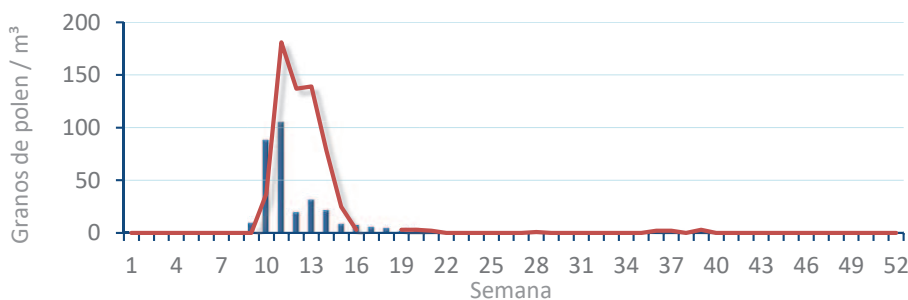
Cupres. / Taxac.
(Ciprés, enebro)



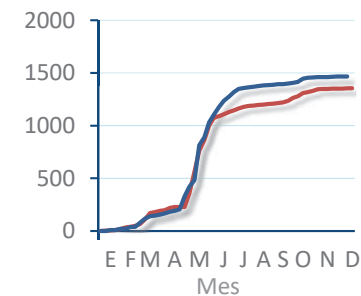
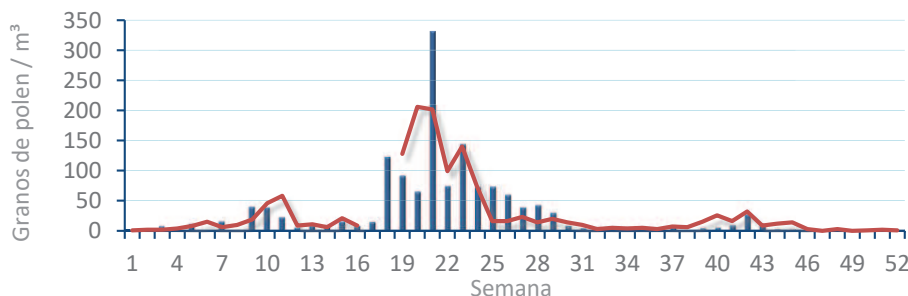
Olea europaea
(Olivo)



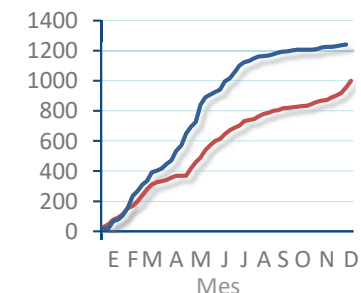
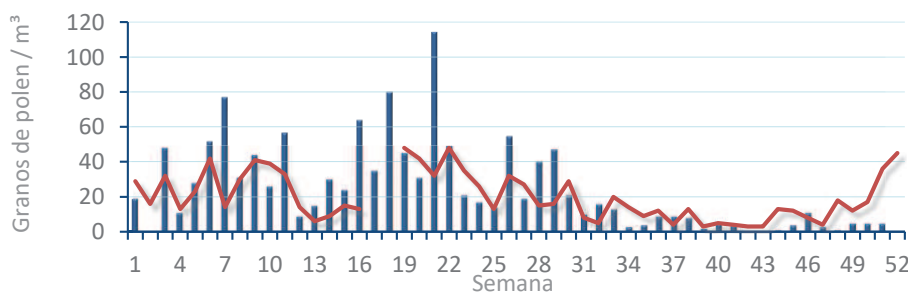
Platanus sp.
(Plátano de sombra)



Poaceae
(Gramíneas)



Urticaceae
(Ortigas, parietarias)



POLEN RESUMEN GRÁFICO SEMANAL

CASTELLÓN

L M X J V S D
14 15 16 17 18 19 20

Diciembre

2020

SEMANA

51

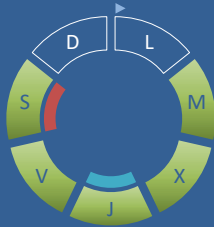
COLABORA

LETIPharma
desde 1919

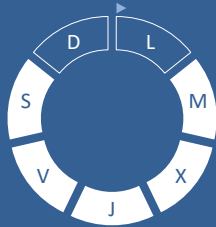


ÁRBOLES

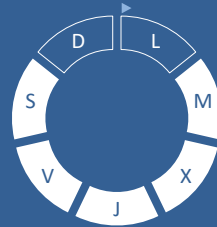
Cupres., Taxac.
(Cipreses, enebros)



Olea europaea
(Oливо)



Platanus sp.
(Plátano de sombra)



TIPOS POLÍNICOS PRINCIPALES

NIVELES

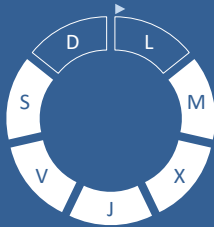
LLUVIA

Litros/m²

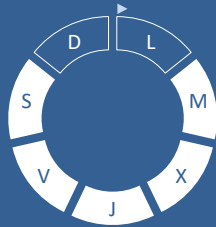


HIERBAS

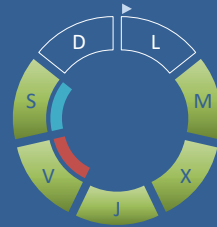
Amaranthaceae
(Cenizas, salsolas)



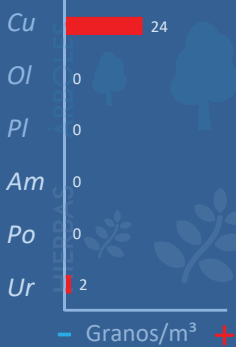
Poaceae
(Gramíneas)



Urticaceae
(Ortigas, parietarias)



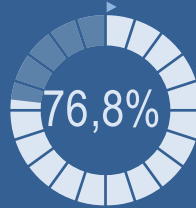
VARIACIÓN RESPECTO A LA SEMANA ANTERIOR



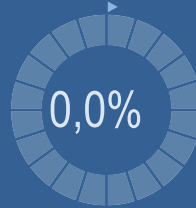
TIPOS POLÍNICOS PRINCIPALES EN PORCENTAJES



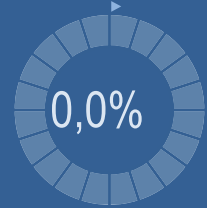
Cupres., Taxac.
(Cipreses, enebros)



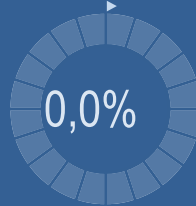
Olea europaea
(Oливо)



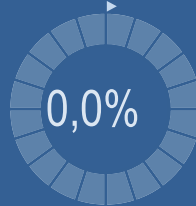
Platanus sp.
(Plátano de sombra)



Amaranthaceae
(Cenizas, salsolas)



Poaceae
(Gramíneas)



Urticaceae
(Ortigas, parietarias)



METEOROLOGÍA



OTOÑO

POLEN DIARIO



POLEN TOTAL

69
Granos/m³

SEMANA ANTERIOR: 45
VARIACIÓN SEMANAL: +24

CAPTADOR: Burkard Spore Trap
INFORME: J.S. Javier Suárez

CONCENTRACIONES DE POLEN EN EL AMBIENTE

AÑO	SEMANA	PUNTO DE MUESTREO	COLABORA	TOTAL
-----	--------	-------------------	----------	-------

2020

51

CASTELLÓN

LETIPharma
desde 1919

69
grn/m³

ESTACIÓN	PRIMAVERA	VERANO	>>OTOÑO<<	INVIERNO	TOTAL SEMANA
----------	-----------	--------	-----------	----------	--------------

PRINCIPALES TIPOS POLÍNICOS

TIPO POLÍNICO	LUNES 14-dic.	MARTES 15-dic.	MIÉRCOLES 16-dic.	JUEVES 17-dic.	VIERNES 18-dic.	SÁBADO 19-dic.	DOMINGO 20-dic.	TOTAL SEMANA
<i>Amaranthaceae</i> (Cenizo, salsola)								0
<i>Cupres./Taxac.</i> (Ciprés, enebro)		14	12	4	2	21		53
<i>Olea</i> (Olivo)								0
<i>Platanus</i> (Plátano de sombra)								0
<i>Poaceae</i> (Gramíneas)								0
<i>Urticaceae</i> (Ortiga, parietaria)		2	2	2	3	1		10

Niveles de polen: ■ altos, ■ medios, ■ bajos, ■ nulos

OTROS TIPOS POLÍNICOS

<i>Artemisia</i> (Artemisa)	S		1			1	S
<i>Palmae</i> (Palmeras)	I					1	I
<i>Pinaceae</i> (Pinos, cedros)	N		1				N
OTROS		1		1			
	D						D
	A						A
	T						T
	O						O
	S						S

SUMA

0 17 16 7 5 24 0

Datos en granos/m³ de aire

ESPORAS

Alternaria

0 16 4 11 3 8 0

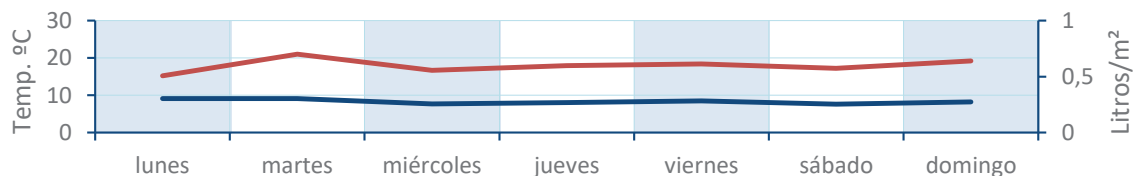
Datos en esporas/m³ de aire

Responsable análisis: Javier Suárez

Situación captador: Hospital General de Castellón

METEO

lluvia
tmax
tmin



REPRESENTACIÓN GRÁFICA

AÑO

SEMANA

PUNTO DE MUESTREO

COLABORA

TOTAL

2020

51

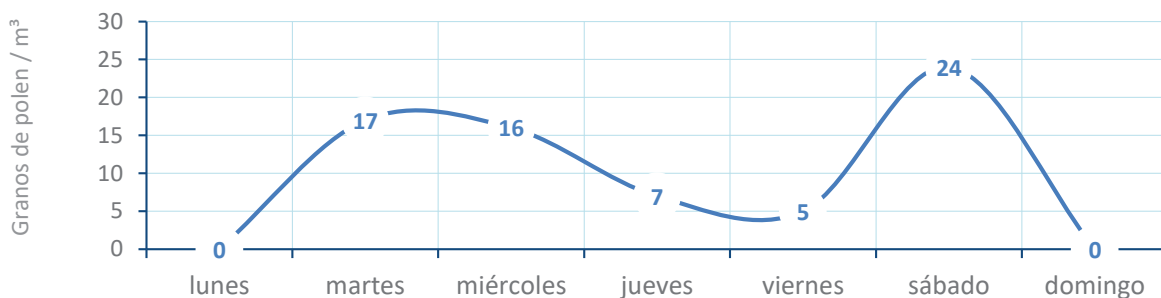
CASTELLÓN

LETIPharma
desde 1919

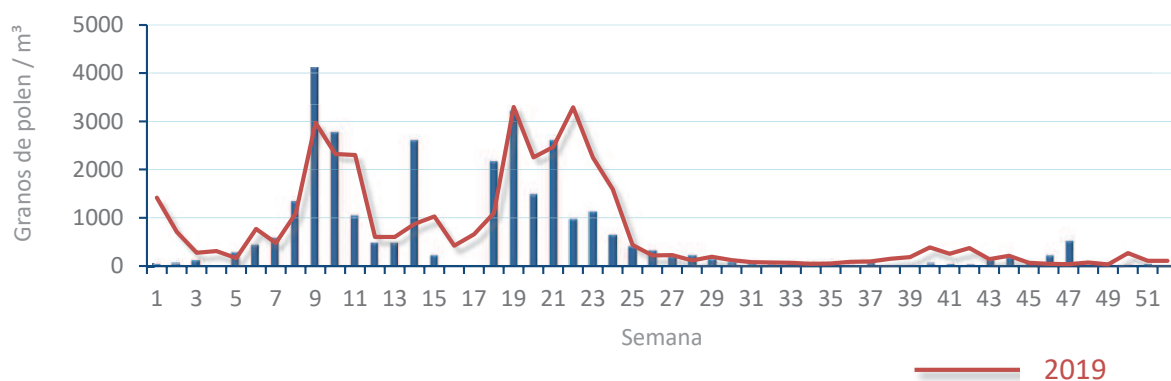
69
grn/m³

POLEN

NIVELES DE POLEN DE LA ÚLTIMA SEMANA

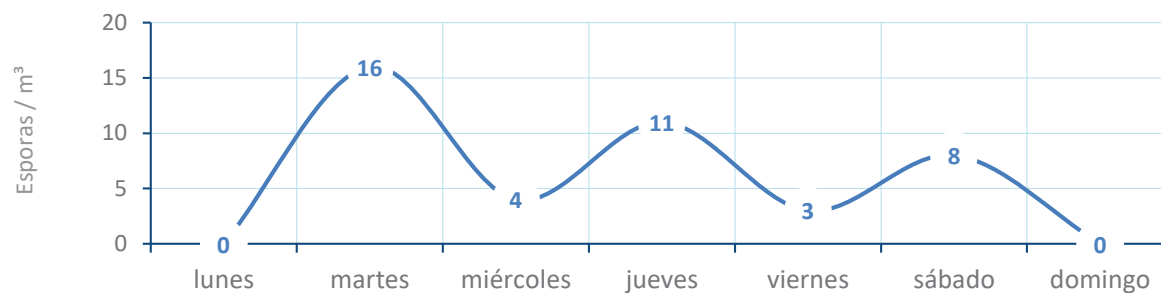


EVOLUCIÓN POLÍNICA SEMANAL

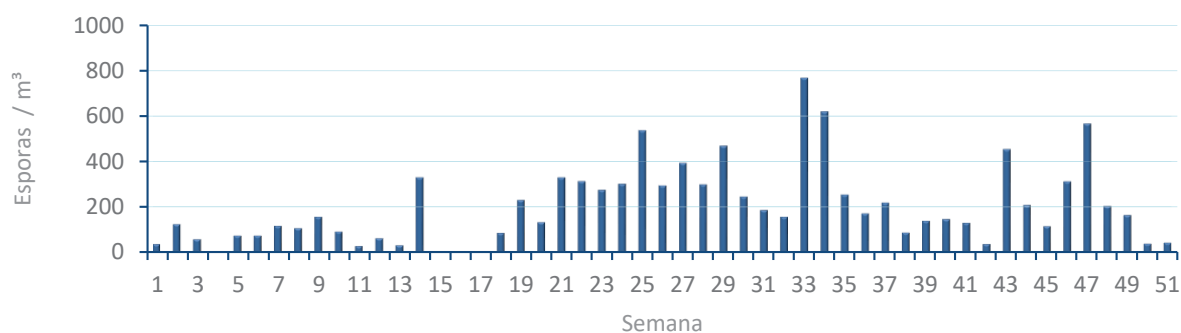


ALTERNARIA

NIVELES DE ALTERNARIA DE LA ÚLTIMA SEMANA



EVOLUCIÓN SEMANAL DE ALTERNARIA



COMPARACIÓN RESPECTO AL AÑO 2019

2020

51

CASTELLÓN

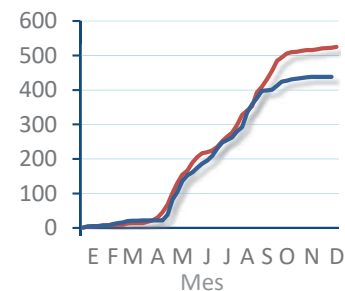
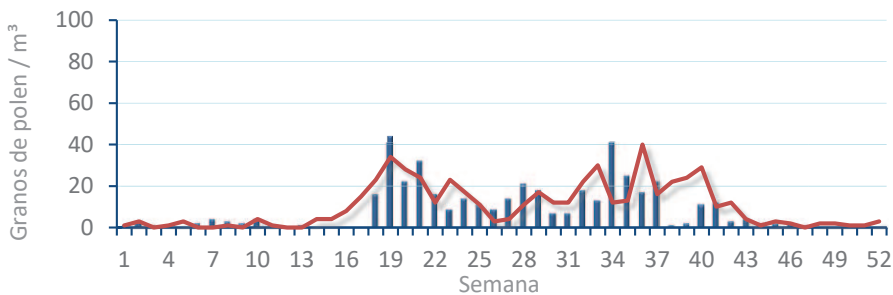


TIPOS

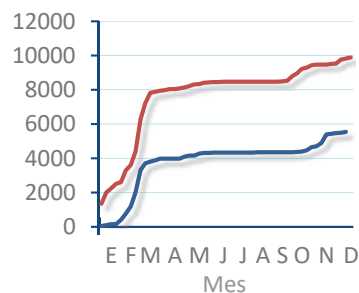
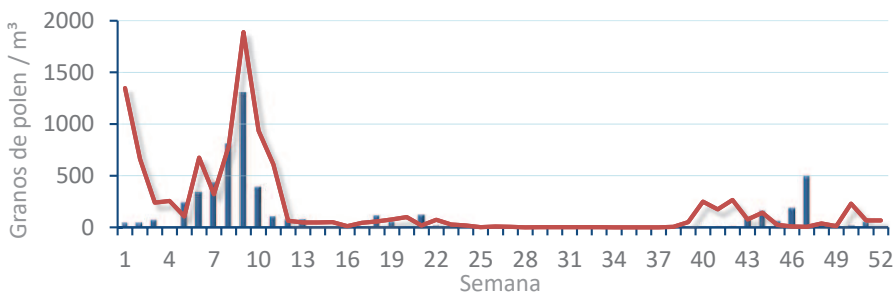
EVOLUCIÓN SEMANAL

DATOS AGRUPADOS

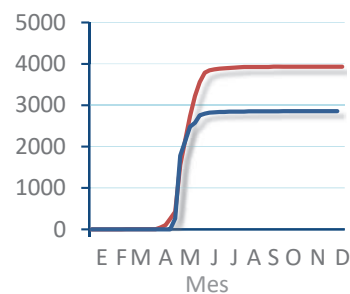
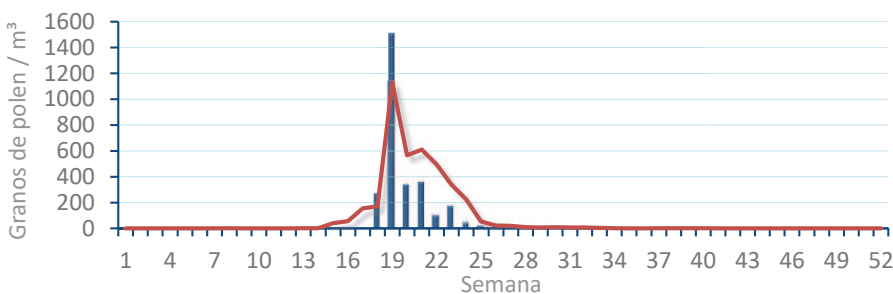
Amaranthaceae
(Cenizo, salsola)



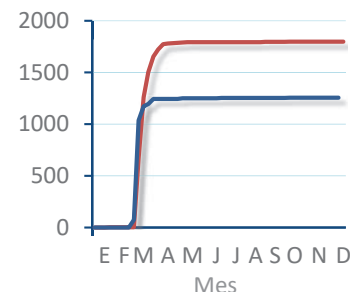
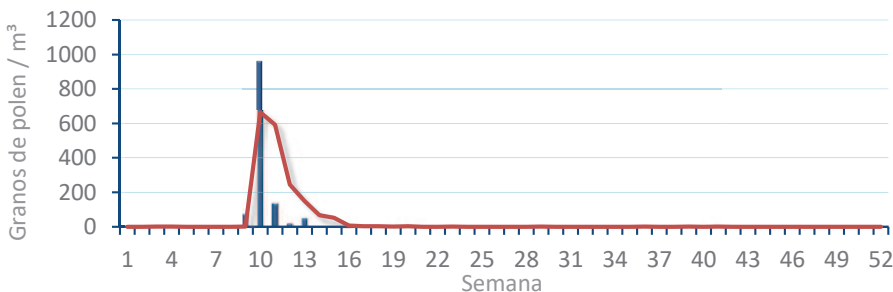
Cupres. /
(Ciprés, enebro)



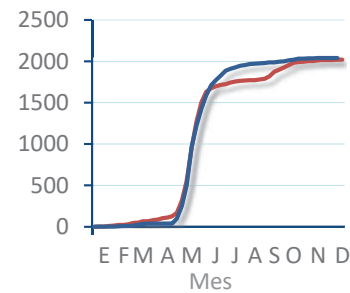
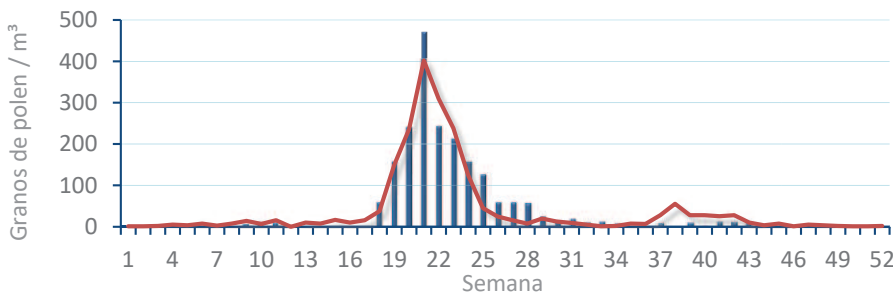
Olea europaea
(Olivo)



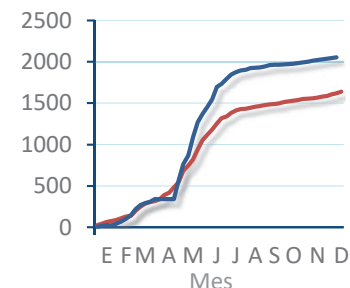
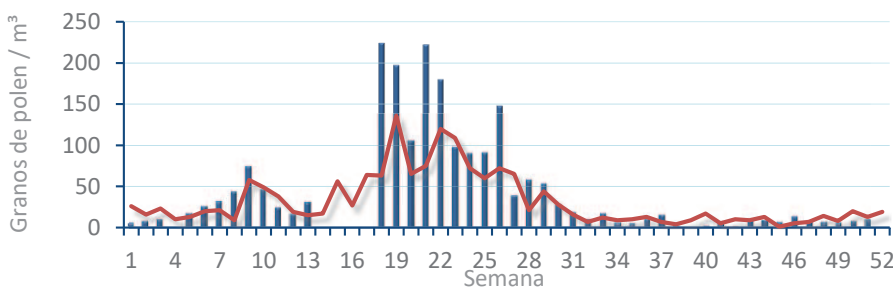
Platanus sp.
(Plátano de)



Poacea
(Gramíneas)



Urticaceae
(Ortigas,



POLEN RESUMEN GRÁFICO SEMANAL



ELDA

L M X J V S D
14 15 16 17 18 19 20

Diciembre

2020

SEMANA

51

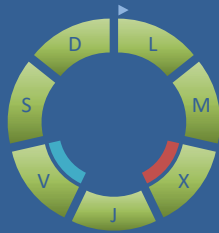
COLABORA

LETIPharma
desde 1919



ÁRBOLES

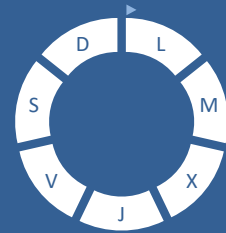
Cupres., Taxac.
(Cipreses, enebros)



Olea europaea
(Olivo)

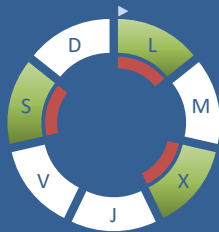


Platanus sp.
(Plátano de sombra)



HIERBAS

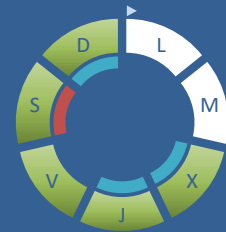
Amaranthaceae
(Cenizos, salsolas)



Poaceae
(Gramíneas)



Urticaceae
(Ortigas, parietarias)



TIPOS POLÍNICOS PRINCIPALES

NIVELES

LLUVIA

Litros/m²



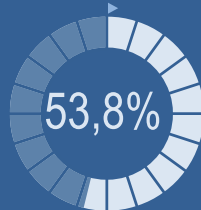
VARIACIÓN RESPECTO A LA SEMANA ANTERIOR



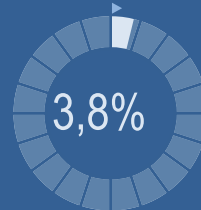
TIPOS POLÍNICOS PRINCIPALES EN PORCENTAJES



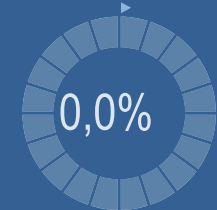
Cupres., Taxac.
(Cipreses, enebros)



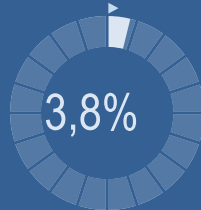
Olea europaea
(Olivo)



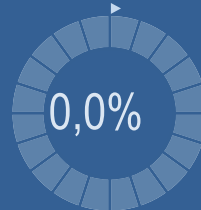
Platanus sp.
(Plátano de sombra)



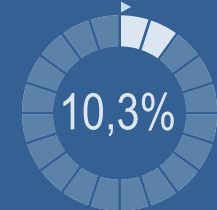
Amaranthaceae
(Cenizos, salsolas)



Poaceae
(Gramíneas)



Urticaceae
(Ortigas, parietarias)



METEOROLOGÍA

20,7 °C
 5,8 °C
 0 L/m²



OTOÑO

POLEN DIARIO



POLEN TOTAL

78

Granos/m³

SEMANA ANTERIOR

273

VARIACIÓN SEMANAL

-195

CAPTADOR:
Burkard
Spore Trap

INFORME:

Javier Suárez

CONCENTRACIONES DE POLEN EN EL AMBIENTE

AÑO	SEMANA	PUNTO DE MUESTREO	COLABORA	TOTAL
-----	--------	-------------------	----------	-------

2020

51

ELDA



78
grn/m³

ESTACIÓN	PRIMAVERA	VERANO	>>OTOÑO<<	INVIERNO	TOTAL SEMANA
----------	-----------	--------	-----------	----------	--------------

PRINCIPALES TIPOS POLÍNICOS

TIPO POLÍNICO	LUNES 14-dic.	MARTES 15-dic.	MIÉRCOLES 16-dic.	JUEVES 17-dic.	VIERNES 18-dic.	SÁBADO 19-dic.	DOMINGO 20-dic.	TOTAL SEMANA
<i>Amaranthaceae</i> (Cenizo, salsola)	1		1			1		3
<i>Cupres./Taxac.</i> (Ciprés, enebro)	7	10	11	2	1	6	5	42
<i>Olea</i> (Olivo)	1	1			1			3
<i>Platanus</i> (Plátano de sombra)								0
<i>Poaceae</i> (Gramíneas)								0
<i>Urticaceae</i> (Ortiga, parietaria)			1	1	2	3	1	8

Niveles de polen: altos (rojo), medios (naranja), bajos (verde), nulos (blanco)

OTROS TIPOS POLÍNICOS

<i>Artemisia</i> (Artemisa)	2		6		3	6		
<i>Palmae</i> (Palmeras)	2	1					1	
OTROS					1			

SUMA

13	12	19	3	8	16	7	
----	----	----	---	---	----	---	--

Datos en granos/m³ de aire

ESPORAS

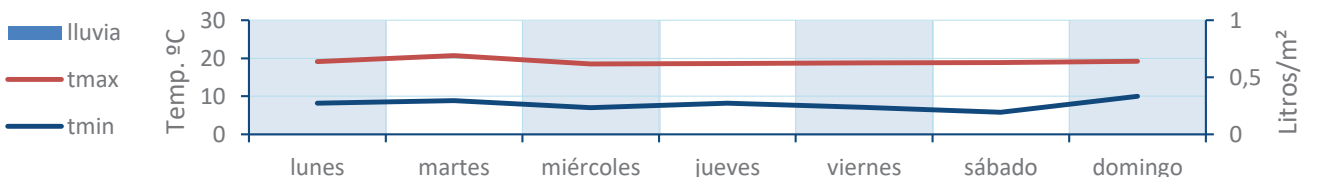
Alternaria

3	2	8	4	7	17	3	
---	---	---	---	---	----	---	--

Datos en esporas/m³ de aire

Responsable análisis: Javier Suárez
Situación captador: Hospital General de Elda

METEO



REPRESENTACIÓN GRÁFICA

AÑO

SEMANA

PUNTO DE MUESTREO

COLABORA

TOTAL

2020

51

ELDA

LETIPharma
desde 1919

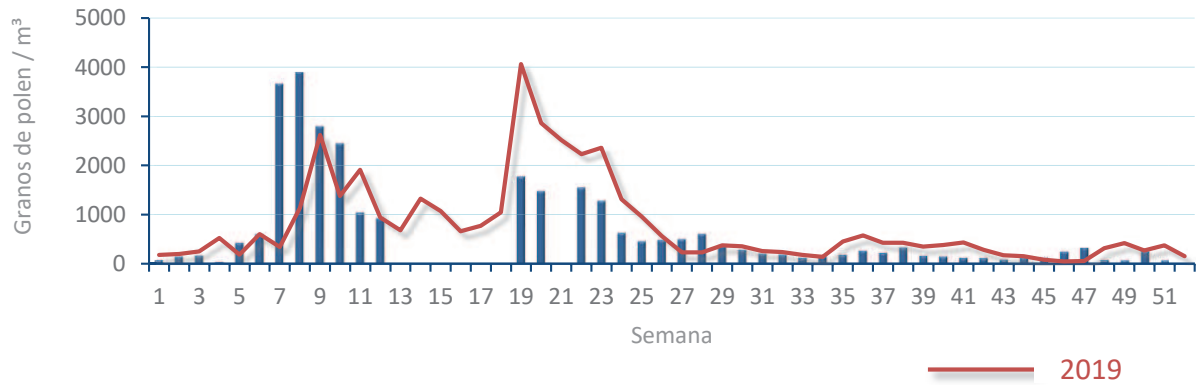
78
gn/m³

POLEN

NIVELES DE POLEN DE LA ÚLTIMA SEMANA

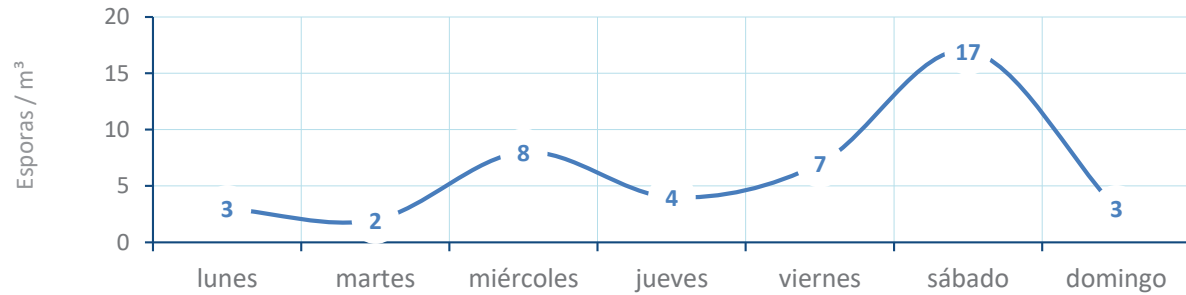


EVOLUCIÓN POLÍNICA SEMANAL

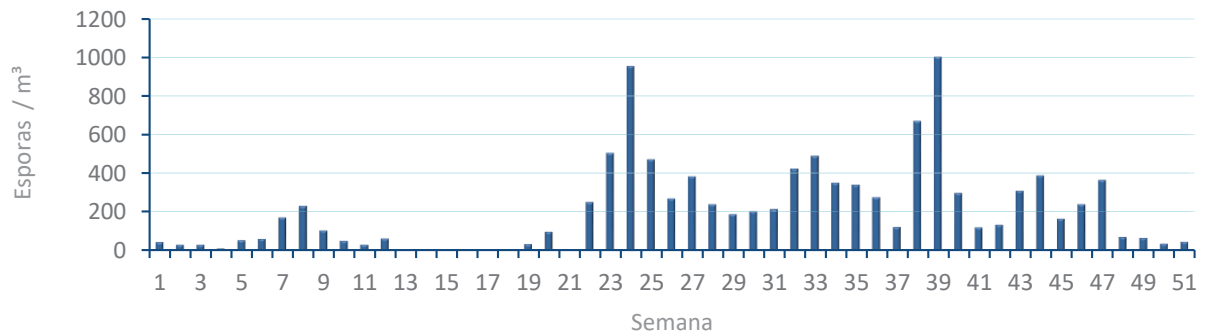


ALTERNARIA

NIVELES DE ALTERNARIA DE LA ÚLTIMA SEMANA



EVOLUCIÓN SEMANAL DE ALTERNARIA



COMPARACIÓN RESPECTO AL AÑO 2019

AÑO

SEMANA

PUNTO DE MUESTREO

COLABORA

AÑOS

2020

51

ELDA

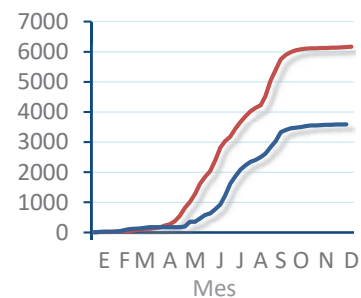
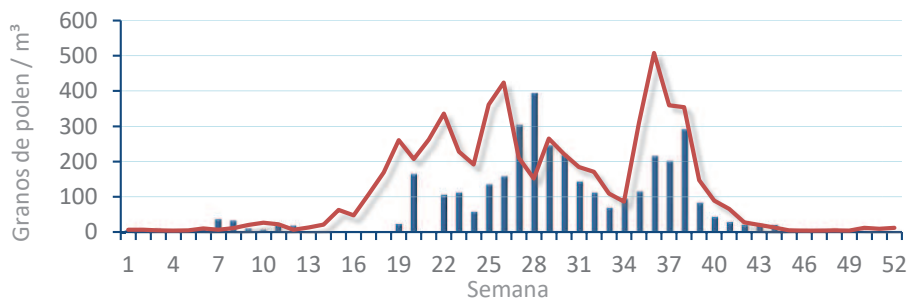


TIPOS

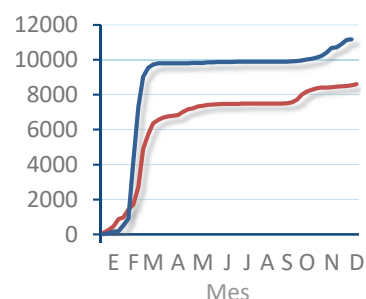
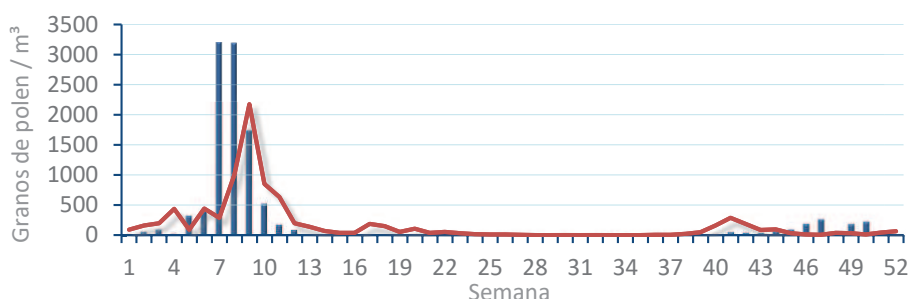
EVOLUCIÓN SEMANAL

DATOS AGRUPADOS

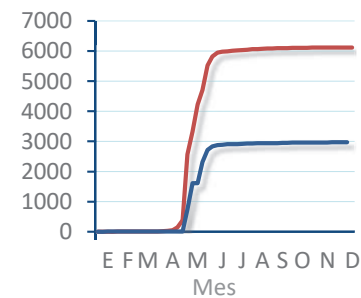
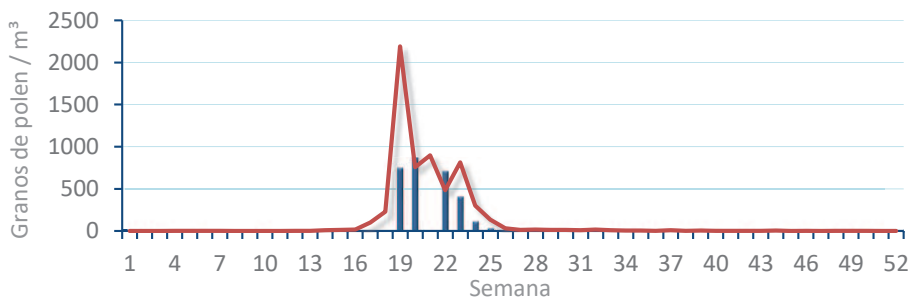
Amaranthaceae
(Cenizo, salsola)



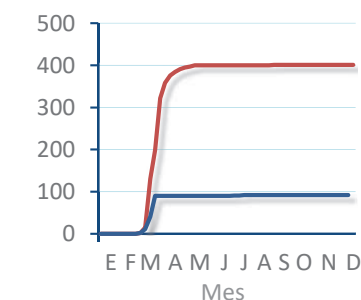
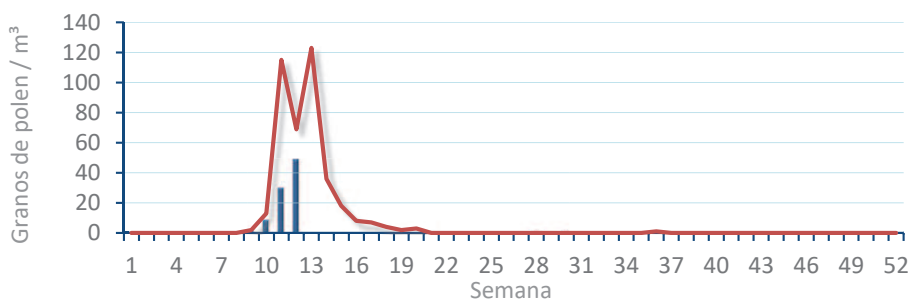
Cupres. / Taxac.
(Ciprés, enebro)



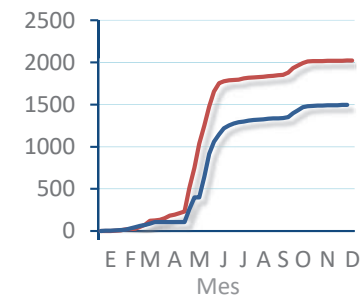
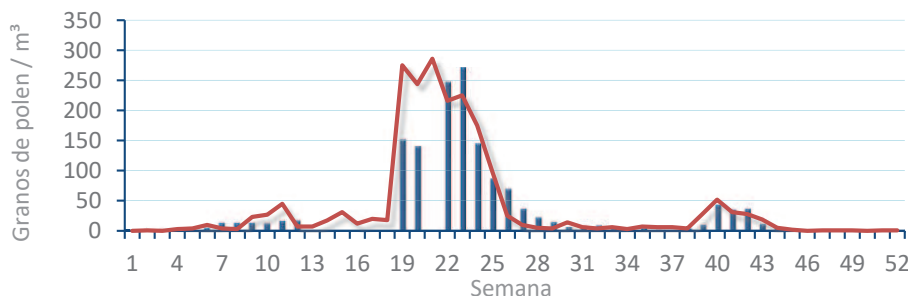
Olea europaea
(Olivo)



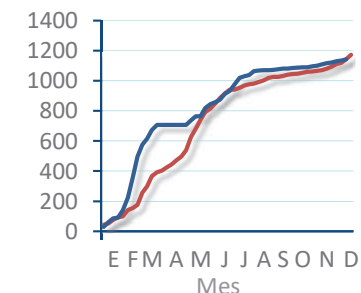
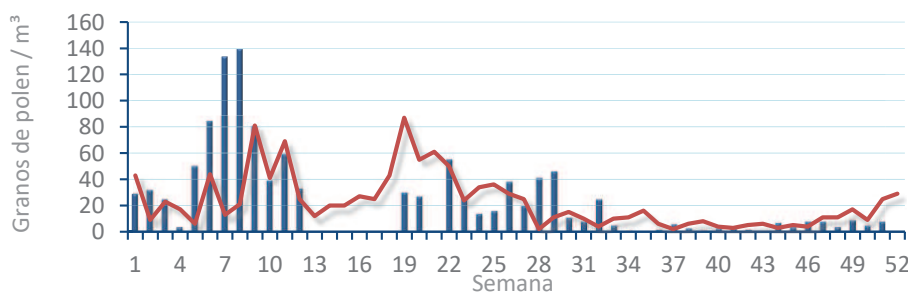
Platanus sp.
(Plátano de sombra)



Poaceae
(Gramíneas)



Urticaceae
(Ortigas, parietarias)



POLEN RESUMEN GRÁFICO SEMANAL

PEGO

L M X J V S D
14 15 16 17 18 19 20

Diciembre

2020

SEMANA

51

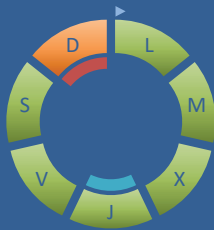
COLABORA

LETIPharma
desde 1919

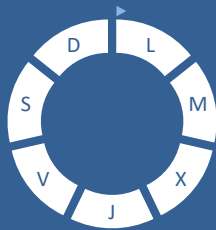


ÁRBOLES

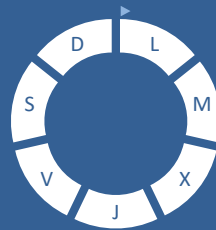
Cupres., Taxac.
(Cipreses, enebros)



Olea europaea
(Olive)

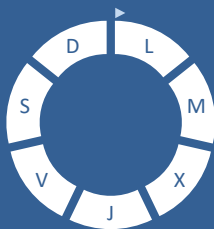


Platanus sp.
(Plátano de sombra)

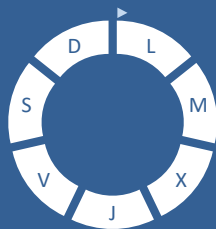


HIERBAS

Amaranthaceae
(Cenizas, salsolas)



Poaceae
(Gramíneas)



Urticaceae
(Ortigas, parietarias)



TIPOS POLÍNICOS PRINCIPALES

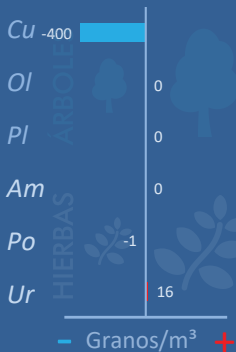
NIVELES

LLUVIA

Litros/m²



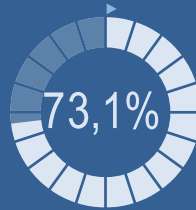
VARIACIÓN RESPECTO A LA SEMANA ANTERIOR



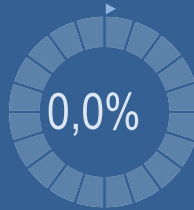
TIPOS POLÍNICOS PRINCIPALES EN PORCENTAJES



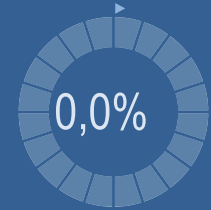
Cupres., Taxac.
(Cipreses, enebros)



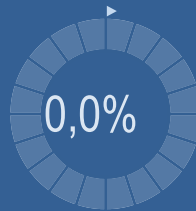
Olea europaea
(Olive)



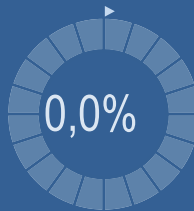
Platanus sp.
(Plátano de sombra)



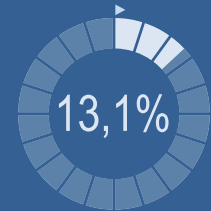
Amaranthaceae
(Cenizas, salsolas)



Poaceae
(Gramíneas)



Urticaceae
(Ortigas, parietarias)



METEOROLOGÍA



OTOÑO

POLEN DIARIO

Granos/m³



POLEN TOTAL

275

Granos/m³

SEMANA ANTERIOR	VARIACIÓN SEMANAL
650	-375

CAPTADOR:
Burkard
Spore Trap

INFORME:
J.S.
Javier Suárez

CONCENTRACIONES DE POLEN EN EL AMBIENTE

AÑO	SEMANA	PUNTO DE MUESTREO	COLABORA	TOTAL
-----	--------	-------------------	----------	-------

2020

51

PEGO



275 grn/m³

ESTACIÓN	PRIMAVERA	VERANO	>>OTOÑO<<	INVIERNO	TOTAL SEMANA
----------	-----------	--------	-----------	----------	--------------

PRINCIPALES TIPOS POLÍNICOS

TIPO POLÍNICO	LUNES 14-dic.	MARTES 15-dic.	MIÉRCOLES 16-dic.	JUEVES 17-dic.	VIERNES 18-dic.	SÁBADO 19-dic.	DOMINGO 20-dic.	TOTAL SEMANA
<i>Amaranthaceae</i> (Cenizo, salsola)								0
<i>Cupres./Taxac.</i> (Ciprés, enebro)	30	33	19	6	10	39	64	201
<i>Olea</i> (Olivo)								0
<i>Platanus</i> (Plátano de sombra)								0
<i>Poaceae</i> (Gramíneas)								0
<i>Urticaceae</i> (Ortiga, parietaria)		5	1	7	6	11	6	36

Niveles de polen: ■ altos ■ medios ■ bajos nulos

OTROS TIPOS POLÍNICOS

<i>Artemisia</i> (Artemisa)	1		5					
<i>Brassicaceae</i> (Crucífera)		1	1			1		
<i>Ericaceae</i> (Brezo)		2	2	3	1	1	4	
<i>Fraxinus</i> (Fresno)		1						
<i>Mercurialis</i> (Mercurial)					1			
<i>Pinaceae</i> (Pinos, cedros)			1					
<i>Quercus</i> (Encina, alcornoque)						2		
<i>Urtica membranacea</i>				3		1	5	
OTROS	2							

SUMA	33	42	29	19	18	55	79	
-------------	-----------	-----------	-----------	-----------	-----------	-----------	-----------	--

Datos en granos/m³ de aire

ESPORAS	Alternaria	1	10	2	6	5	9	5	
----------------	-------------------	---	----	---	---	---	---	---	--

Datos en esporas/m³ de aire

Responsable análisis: Javier Suárez
Situación captador: Colegio San Antonio

METEO



REPRESENTACIÓN GRÁFICA

AÑO

SEMANA

PUNTO DE MUESTREO

COLABORA

TOTAL

2020

51

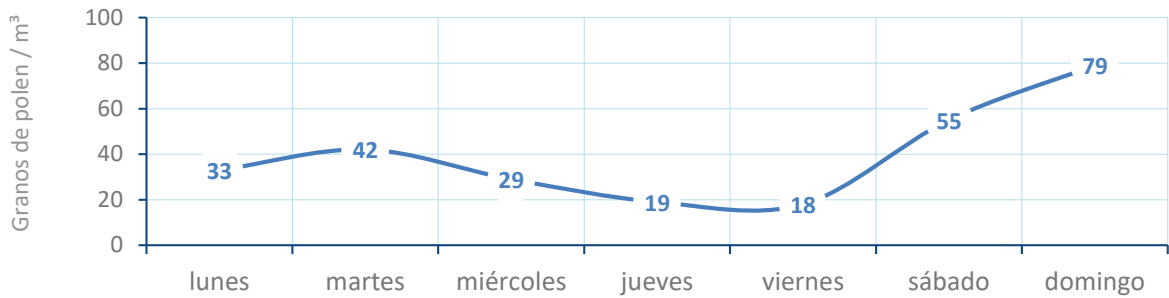
PEGO



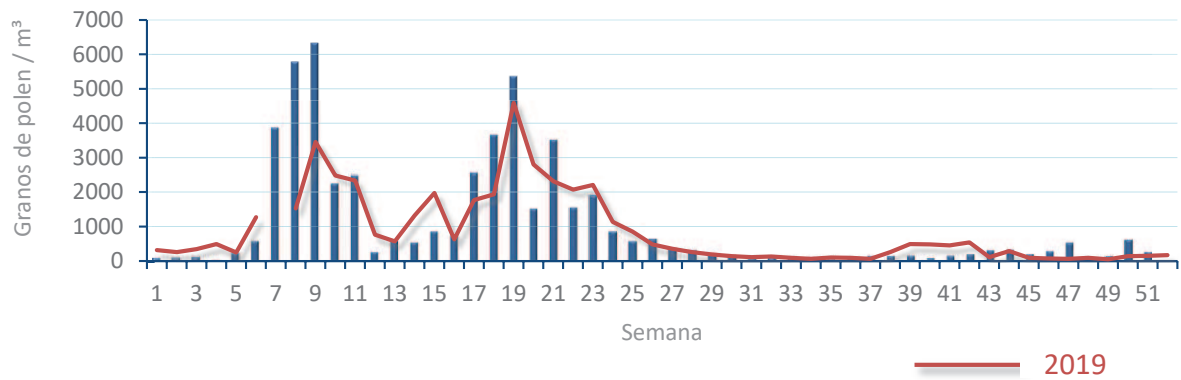
275
grn/m³

POLEN

NIVELES DE POLEN DE LA ÚLTIMA SEMANA

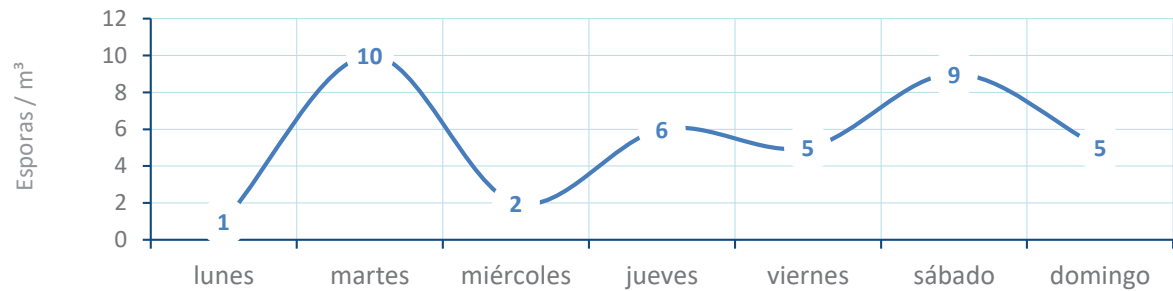


EVOLUCIÓN POLÍNICA SEMANAL

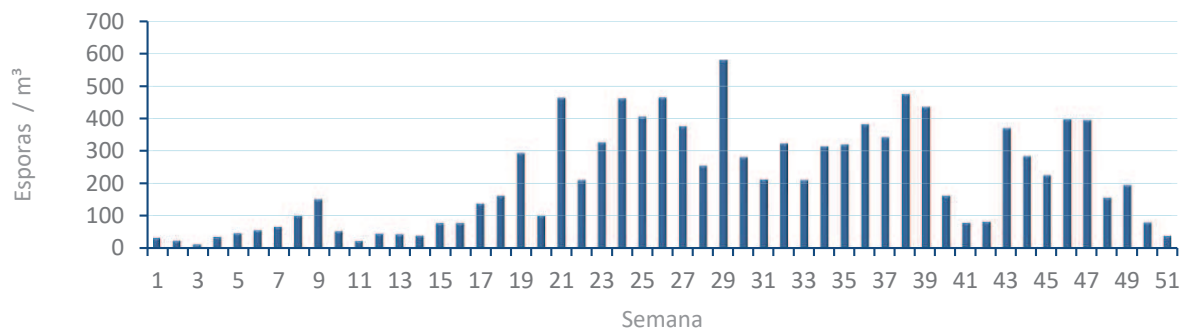


ALTERNARIA

NIVELES DE ALTERNARIA DE LA ÚLTIMA SEMANA



EVOLUCIÓN SEMANAL DE ALTERNARIA



COMPARACIÓN RESPECTO AL AÑO 2019

2020

51

PEGO

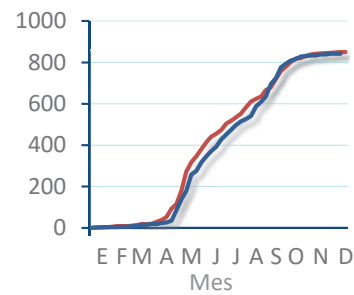
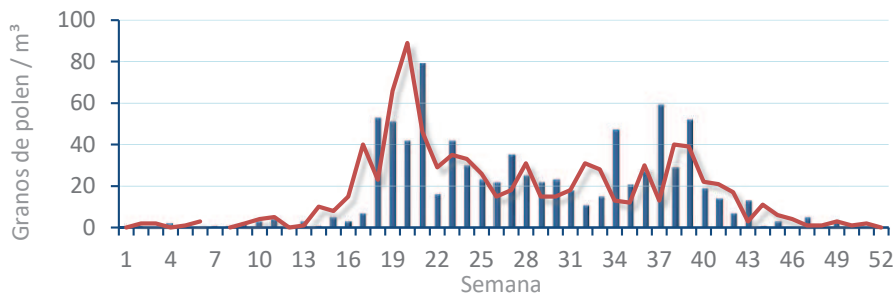


TIPOS

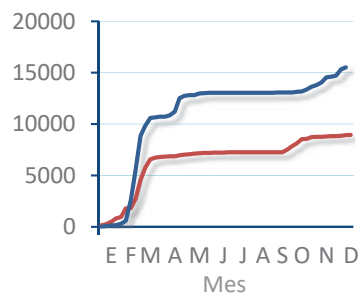
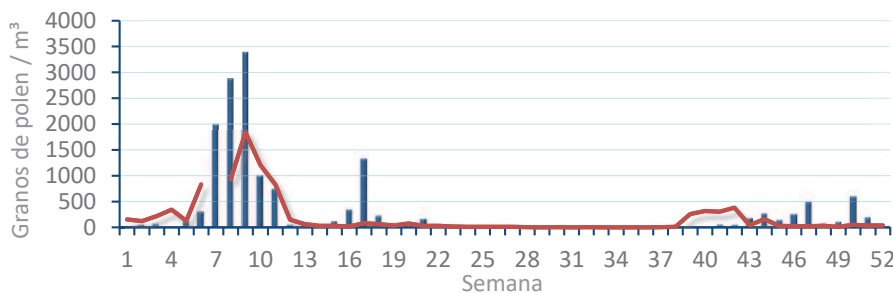
EVOLUCIÓN SEMANAL

DATOS AGRUPADOS

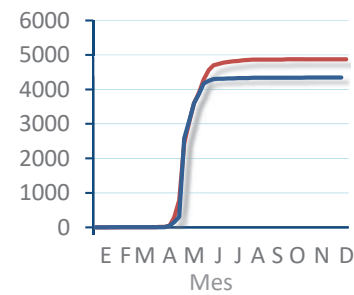
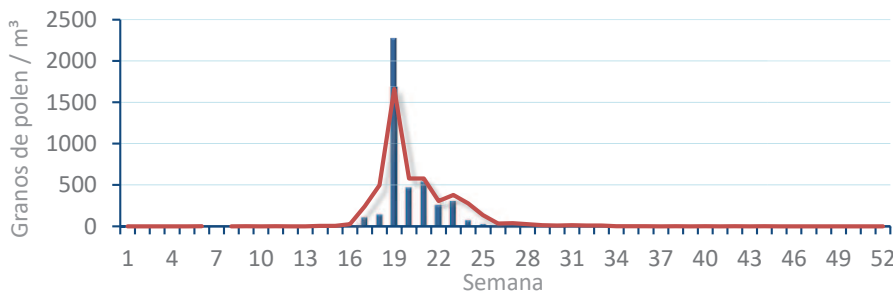
Amaranthaceae
(Cenizo, salsola)



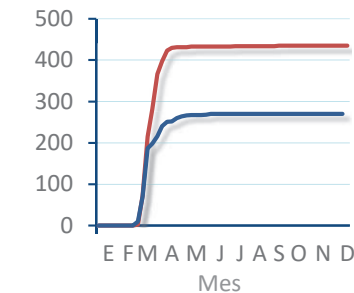
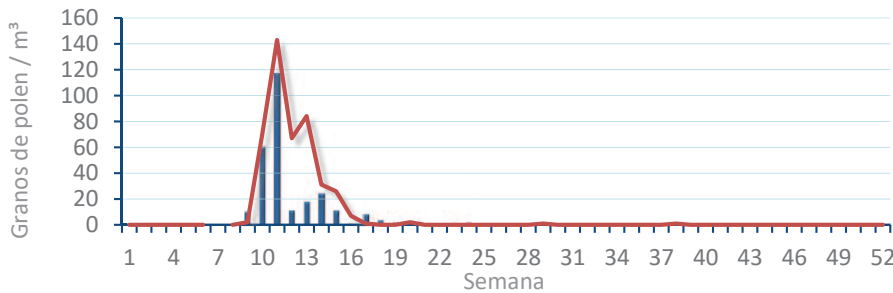
Cupres. /
(Ciprés, enebro)



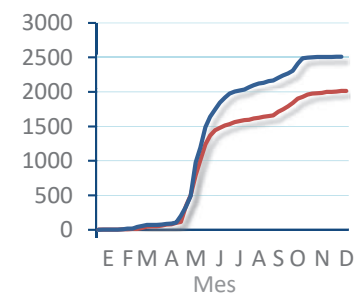
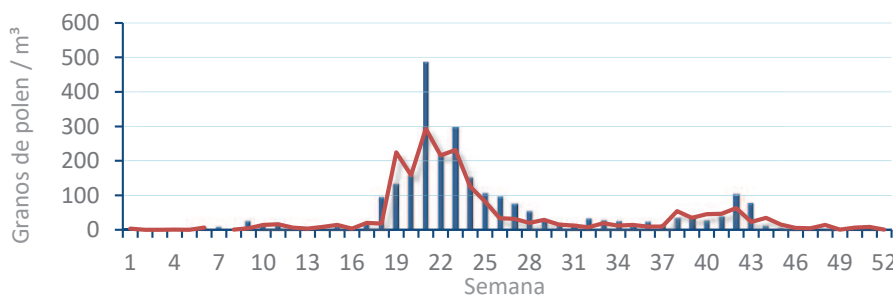
Olea europaea
(Olivo)



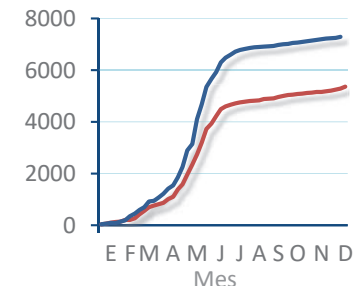
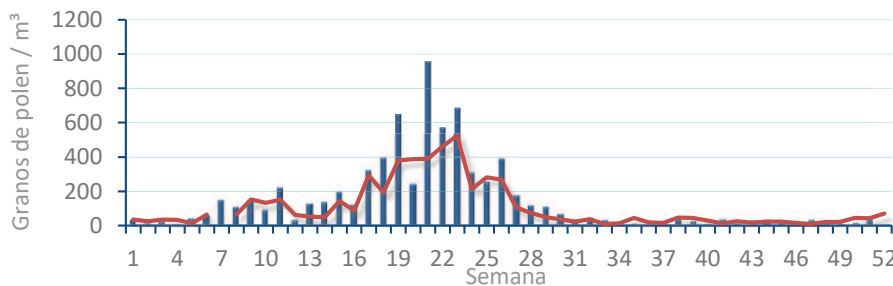
Platanus sp.
(Plátano de



Poacea
(Gramíneas)



Urticaceae
(Ortigas,



POLEN RESUMEN GRÁFICO SEMANAL

VALENCIA

L M X J V S D
14 15 16 17 18 19 20

Diciembre

2020

SEMANA

51

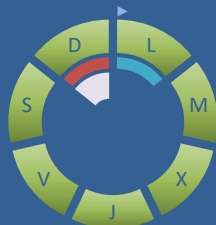
COLABORA

LETIPharma
desde 1919

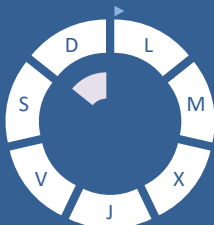


ÁRBOLES

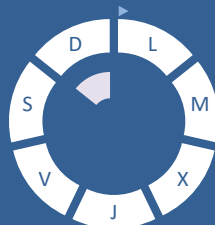
Cupres., Taxac.
(Cipreses, enebros)



Olea europaea
(Olivo)

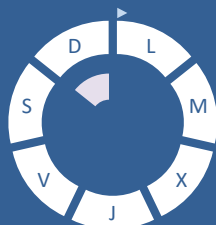


Platanus sp.
(Plátano de sombra)

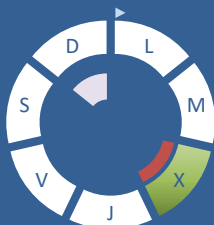


HIERBAS

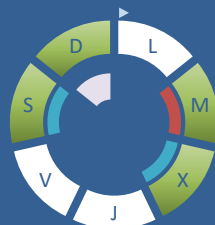
Amaranthaceae
(Cenizos, salsolas)



Poaceae
(Gramíneas)



Urticaceae
(Ortigas, parietarias)



TIPOS POLÍNICOS PRINCIPALES

NIVELES

LLUVIA

Litros/m²



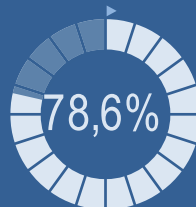
VARIACIÓN RESPECTO A LA SEMANA ANTERIOR



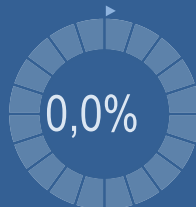
TIPOS POLÍNICOS PRINCIPALES EN PORCENTAJES



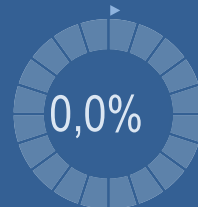
Cupres., Taxac.
(Cipreses, enebros)



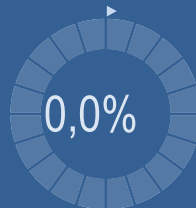
Olea europaea
(Olivo)



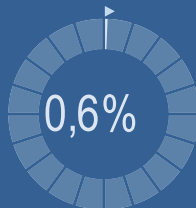
Platanus sp.
(Plátano de sombra)



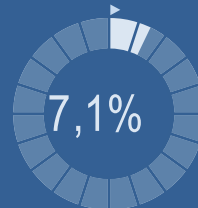
Amaranthaceae
(Cenizos, salsolas)



Poaceae
(Gramíneas)



Urticaceae
(Ortigas, parietarias)



METEOROLOGÍA

20,1 °C

7,7 °C

0,2 L/m²

OTOÑO

POLEN DIARIO



POLEN TOTAL

154

Granos/m³

SEMANA ANTERIOR
451

VARIACIÓN SEMANAL
-297

CAPTADOR:
Burkard
Spore Trap

INFORME:
J.S.
Javier Suárez

REPRESENTACIÓN GRÁFICA

AÑO

SEMANA

PUNTO DE MUESTREO

COLABORA

TOTAL

2020

51

VALENCIA

LETIPharma
desde 1919

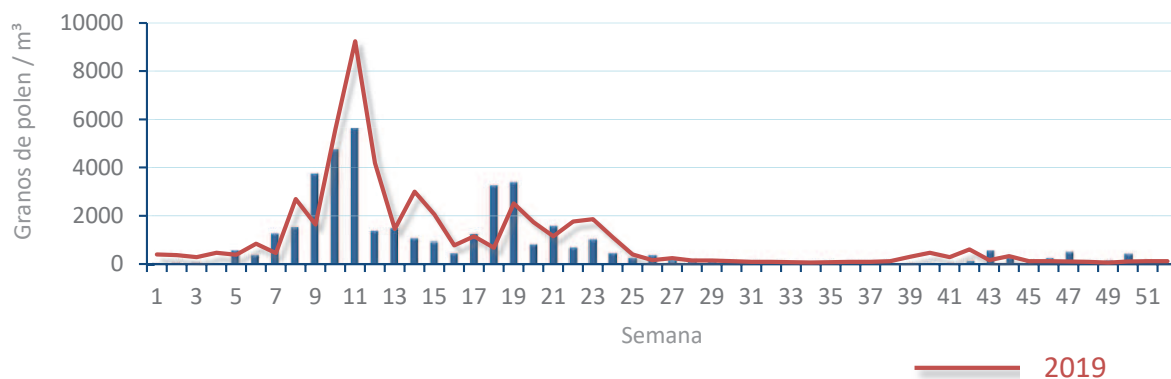
154
grn/m³

POLEN

NIVELES DE POLEN DE LA ÚLTIMA SEMANA

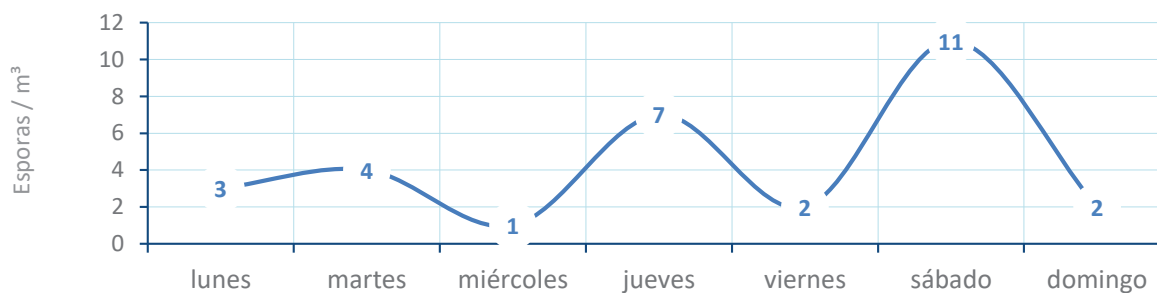


EVOLUCIÓN POLÍNICA SEMANAL

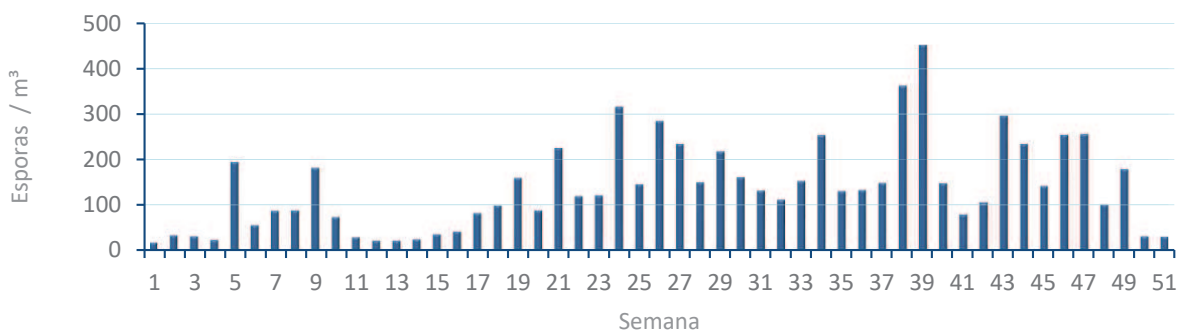


ALTERNARIA

NIVELES DE ALTERNARIA DE LA ÚLTIMA SEMANA



EVOLUCIÓN SEMANAL DE ALTERNARIA



COMPARACIÓN RESPECTO AL AÑO 2019

2020

51

VALENCIA

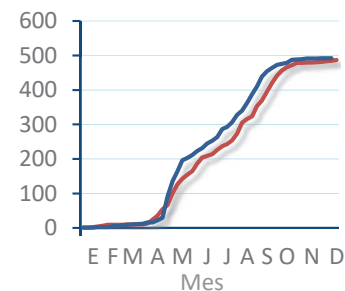
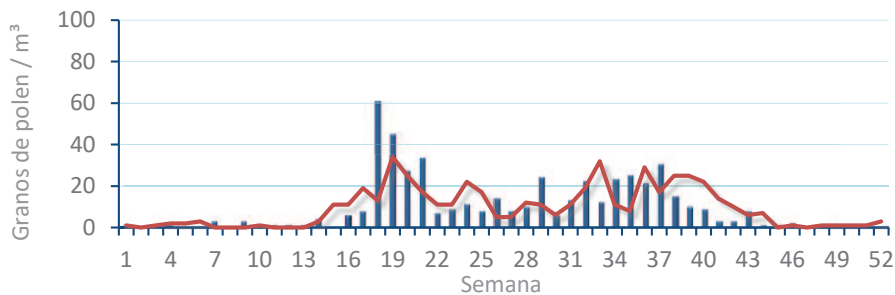


TIPOS

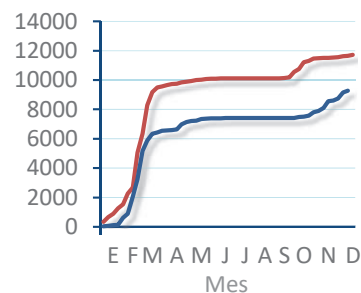
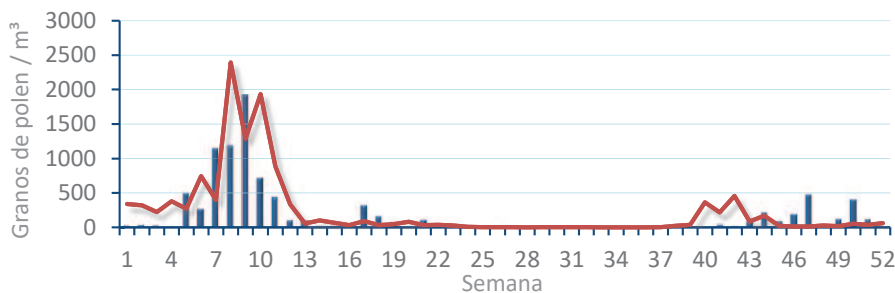
EVOLUCIÓN SEMANAL

DATOS AGRUPADOS

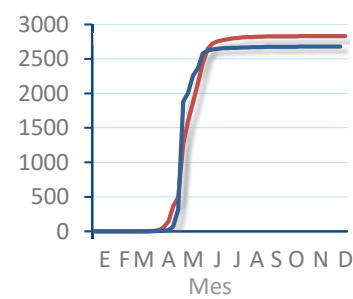
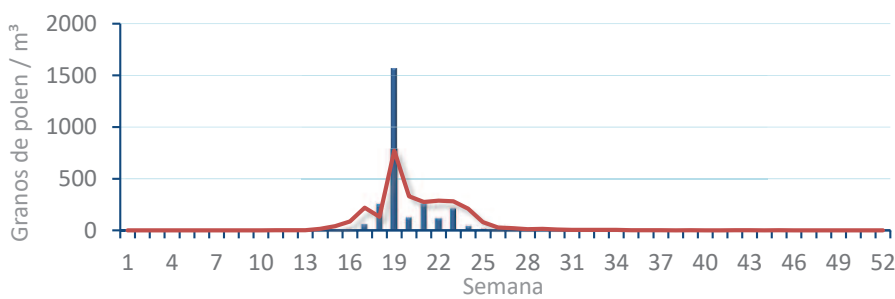
Amaranthaceae
(Cenizo, salsola)



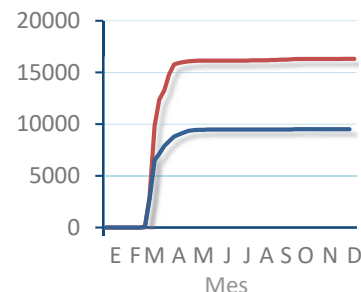
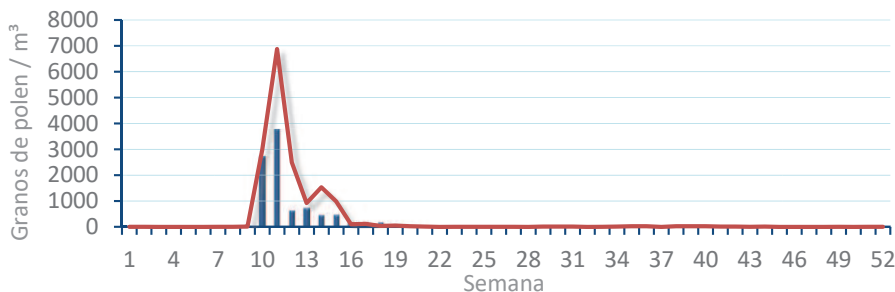
Cupres. /
(Ciprés, enebro)



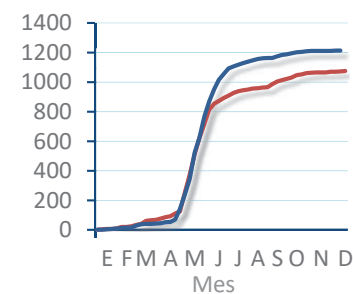
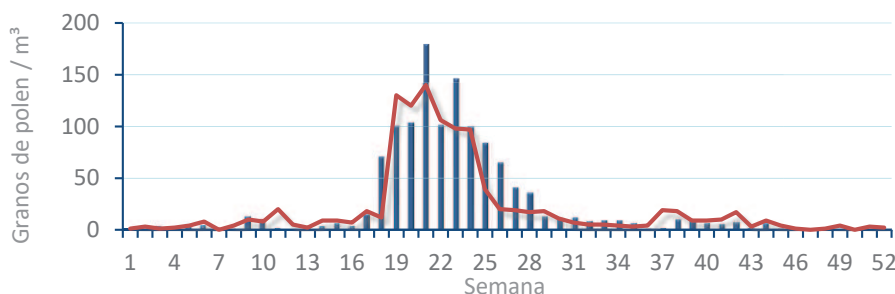
Olea europaea
(Olivo)



Platanus sp.
(Plátano de)



Poacea
(Gramíneas)



Urticaceae
(Ortigas,

