

ANÁLISIS AEROBIOLÓGICO



ALICANTE

2016

Datos en granos/m³ de aire

| SEMANA 21 | Lunes 6-jun | Martes 7-jun | Miércoles 8-jun | Jueves 9-jun | Viernes 10-jun | Sábado 11-jun | Domingo 12-jun |
|--|----------------|-----------------|--------------------|-----------------|-------------------|------------------|-------------------|
| Apiaceae (Umbelífera) | S | | | | 5 | | 1 |
| Cannabis (Cáñamo) | I | | | 1 | 1 | 2 | 2 |
| Castanea (Castaño) | N | | | | | 2 | |
| Chenopodiaceae (Cenizo, salsola) | | 3 | 10 | 2 | 4 | 7 | 9 |
| Compositae (Tipo Senecio) | D | | | | | 1 | 1 |
| Compositae (Tipo Taraxacum) | A | | | | | 3 | |
| Cupressaceae (Ciprés, enebro) | T | | 18 | 10 | 7 | 8 | 12 |
| Cyperaceae (Juncia, lastán) | O | | | | 2 | 4 | 1 |
| Echium (Viborera) | S | | | | | | 1 |
| Ericaceae (Brezo) | | | | | | | 1 |
| Olea (Olivo) | | 17 | 39 | 312 | 368 | 249 | 349 |
| Pinaceae (Pinos, cedros) | | 8 | 8 | 44 | 28 | 90 | 48 |
| Plantago (Llantén) | | 1 | 3 | 2 | 5 | 14 | 6 |
| Poaceae (Gramínea) | | 6 | 24 | 21 | 63 | 62 | 67 |
| Quercus (Encina, alcornoque) | | 27 | 30 | 103 | 70 | 123 | 74 |
| Rumex (Acedera) | | 1 | 2 | 3 | 1 | 3 | 8 |
| Typhaceae (Tifa) | | | | | 3 | 2 | |
| Urticaceae (Ortiga, parietaria) | | 2 | 1 | 5 | 1 | 13 | 14 |
| OTROS | | | | 1 | 1 | | 1 |
| TOTAL | 0 | 65 | 135 | 504 | 559 | 583 | 595 |
| Alternaria | 0 | 5 | 6 | 5 | 6 | 8 | 10 |

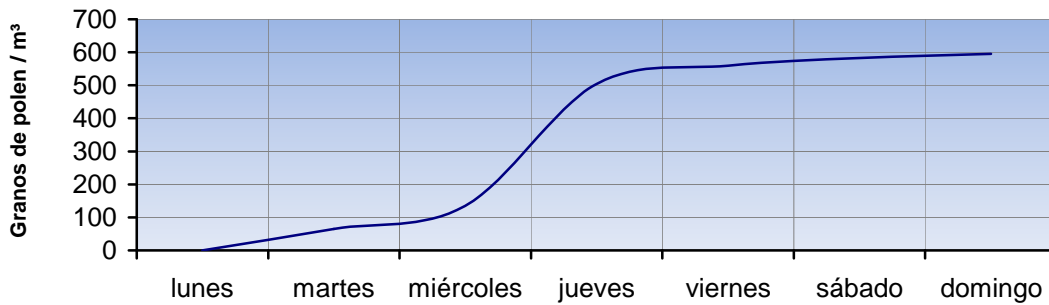
Punto de muestreo: Hospital General Universitario de Alicante

Responsable: Francisco Javier Suárez Pérez

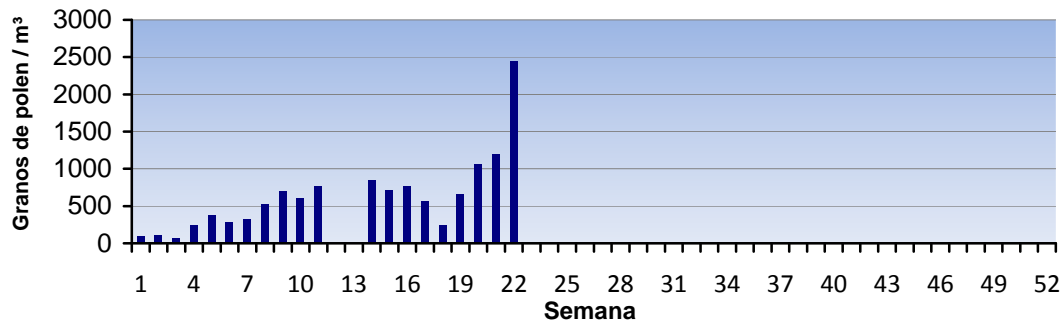
REPRESENTACIÓN GRÁFICA

POLEN

EVOLUCIÓN AEROPOLÍNICA SEMANAL

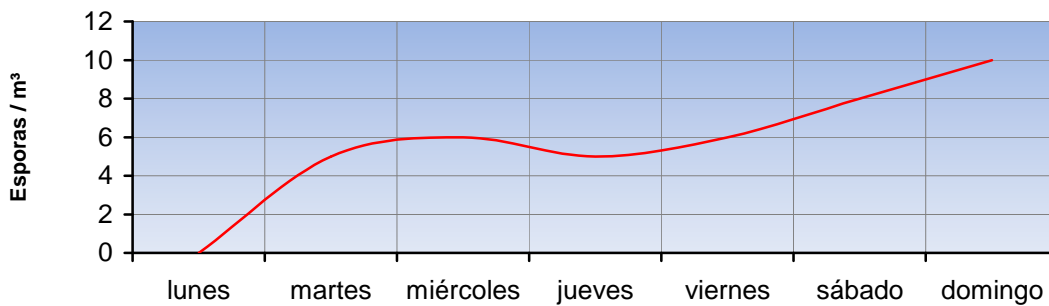


EVOLUCIÓN AEROPOLÍNICA ANUAL

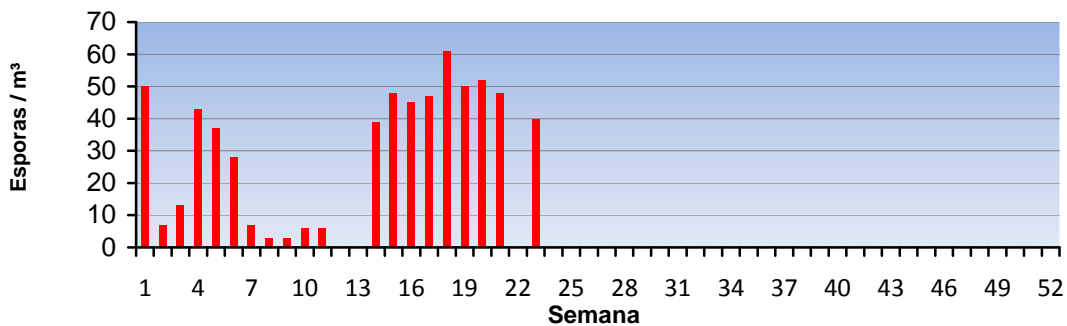


ALTERNARIA

EVOLUCIÓN SEMANAL DE ALTERNARIA



EVOLUCIÓN ANUAL DE ALTERNARIA



Punto de muestreo: Hospital General Universitario de Alicante

Responsable: Francisco Javier Suárez Pérez

ANÁLISIS AEROBIOLÓGICO



CASTELLÓN

2016

Datos en granos/m³ de aire

| SEMANA 23 | Lunes 6-jun | Martes 7-jun | Miércoles 8-jun | Jueves 9-jun | Viernes 10-jun | Sábado 11-jun | Domingo 12-jun |
|--|----------------|-----------------|--------------------|-----------------|-------------------|------------------|-------------------|
| Apiaceae (Umbelífera) | | | | 1 | | | 1 |
| Betula (Abedul) | 1 | | | 2 | | | |
| Cannabis (Cáñamo) | 1 | | | | | | 1 |
| Chenopodiaceae (Cenizo, salsola) | 4 | 2 | | 1 | 2 | 4 | 4 |
| Compositae (Tipo Senecio) | | | | | | | 1 |
| Compositae (Tipo Taraxacum) | | | | | 2 | 1 | |
| Cupressaceae (Ciprés, enebro) | 5 | 1 | 2 | 9 | 10 | 9 | 3 |
| Ericaceae (Brezo) | | | | 2 | 1 | 3 | |
| Olea (Olivo) | 26 | 51 | 107 | 92 | 80 | 63 | 122 |
| Pinaceae (Pinos, cedros) | 23 | 12 | 50 | 210 | 56 | 67 | 71 |
| Plantago (Llantén) | 5 | 2 | 3 | 6 | 5 | 5 | 8 |
| Poaceae (Gramínea) | 17 | 14 | 20 | 30 | 26 | 18 | 37 |
| Quercus (Encina, alcornoque) | 57 | 44 | 69 | 227 | 145 | 92 | 99 |
| Rumex (Acedera) | 1 | 1 | 3 | 2 | 12 | 4 | 2 |
| Typhaceae (Tifa) | 2 | 2 | 2 | 7 | 3 | 1 | 3 |
| Urticaceae (Ortiga, parietaria) | 16 | 19 | 15 | 11 | 4 | 11 | 9 |
| OTROS | 1 | | 1 | | | 1 | 3 |
| | | | | | | | |
| | | | | | | | |
| | | | | | | | |
| TOTAL | 159 | 148 | 272 | 600 | 346 | 279 | 364 |

| | | | | | | | |
|-------------------|----|----|----|---|----|----|----|
| Alternaria | 13 | 12 | 17 | 8 | 13 | 17 | 17 |
|-------------------|----|----|----|---|----|----|----|

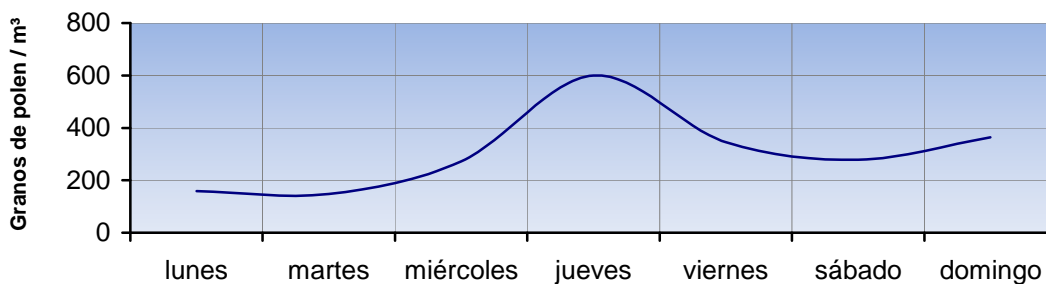
Punto de muestreo: Hospital General de Castellón

Responsable: Francisco Javier Suárez Pérez

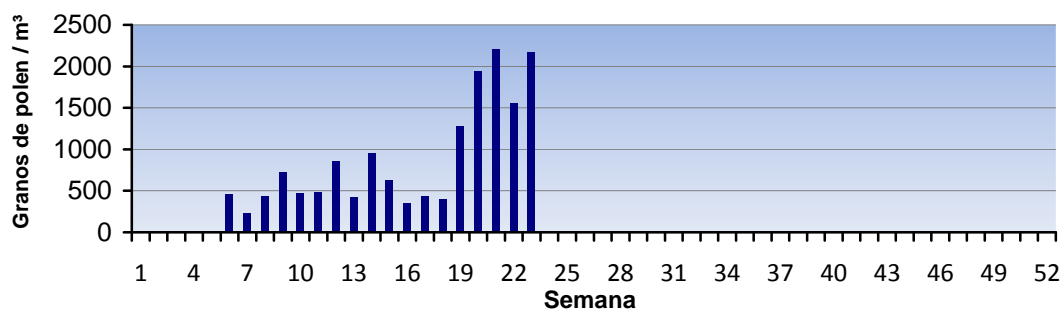
REPRESENTACIÓN GRÁFICA

POLEN

EVOLUCIÓN AEROPOLÍNICA SEMANAL

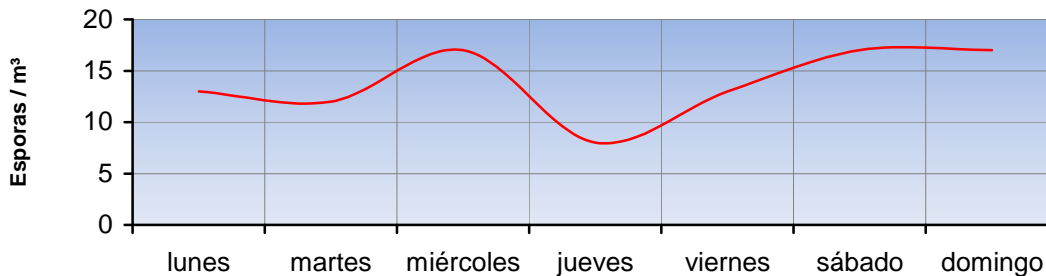


EVOLUCIÓN AEROPOLÍNICA ANUAL

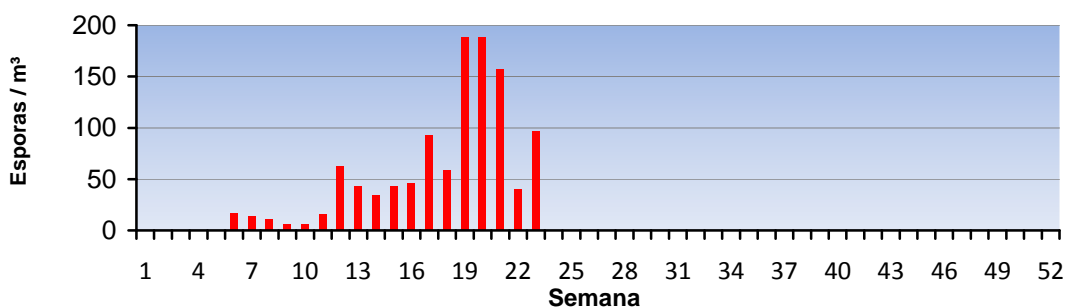


ALTERNARIA

EVOLUCIÓN SEMANAL DE ALTERNARIA



EVOLUCIÓN ANUAL DE ALTERNARIA



Punto de muestreo: Hospital General de Castellón

Responsable: Francisco Javier Suárez Pérez

ANÁLISIS AEROBIOLÓGICO



PEGO
2016

Datos en granos/m³ de aire

| SEMANA 23 | Lunes 6-jun | Martes 7-jun | Miércoles 8-jun | Jueves 9-jun | Viernes 10-jun | Sábado 11-jun | Domingo 12-jun |
|--|----------------|-----------------|--------------------|-----------------|-------------------|------------------|-------------------|
| Apiaceae (Umbelífera) | 3 | 1 | | 1 | 3 | | 1 |
| Brassicaceae (Crucífera) | | | | | | 1 | |
| Chenopodiaceae (Cenizo, salsola) | 2 | 1 | 7 | 5 | 3 | 4 | 3 |
| Compositae (Tipo Senecio) | | | | | 1 | | |
| Compositae (Tipo Taraxacum) | | | | | | 2 | 2 |
| Cupressaceae (Ciprés, enebro) | 4 | 1 | 2 | 9 | 9 | 18 | 10 |
| Cyperaceae (Juncia, lastán) | | 1 | 1 | 4 | 1 | 3 | |
| Echium (Viborera) | 1 | | | | | 1 | |
| Ericaceae (Brezo) | 1 | | | 4 | 3 | 3 | 1 |
| Juglans (Nogal) | | | | | | | 1 |
| Moraceae (Morera del papel) | | | 1 | | | | |
| Olea (Olivo) | 65 | 63 | 184 | 234 | 220 | 171 | 164 |
| Pinaceae (Pinos, cedros) | 7 | 8 | 8 | 109 | 33 | 155 | 40 |
| Plantago (Llantén) | 2 | 4 | 5 | 10 | 6 | 4 | 10 |
| Poaceae (Gramínea) | 17 | 32 | 35 | 47 | 51 | 77 | 40 |
| Quercus (Encina, alcornoque) | 52 | 43 | 64 | 212 | 138 | 116 | 82 |
| Rumex (Acedera) | 4 | 1 | | 2 | 9 | 6 | 7 |
| Typhaceae (Tifa) | 15 | 12 | 8 | 3 | 4 | 1 | 9 |
| Urticaceae (Ortiga, parietaria) | 45 | 35 | 44 | 33 | 27 | 31 | 27 |
| OTROS | | 1 | | | 2 | 4 | 1 |
| TOTAL | 218 | 203 | 359 | 673 | 510 | 597 | 398 |

| | | | | | | | |
|-------------------|----|----|----|----|----|----|----|
| Alternaria | 11 | 18 | 25 | 17 | 16 | 15 | 17 |
|-------------------|----|----|----|----|----|----|----|

Punto de muestreo: Colegio San Antonio

Responsable: Francisco Javier Suárez Pérez

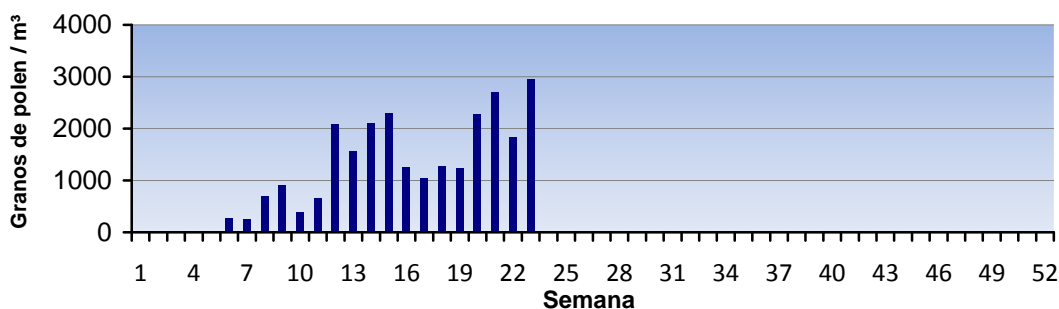
REPRESENTACIÓN GRÁFICA

POLEN

EVOLUCIÓN AEROPOLÍNICA SEMANAL

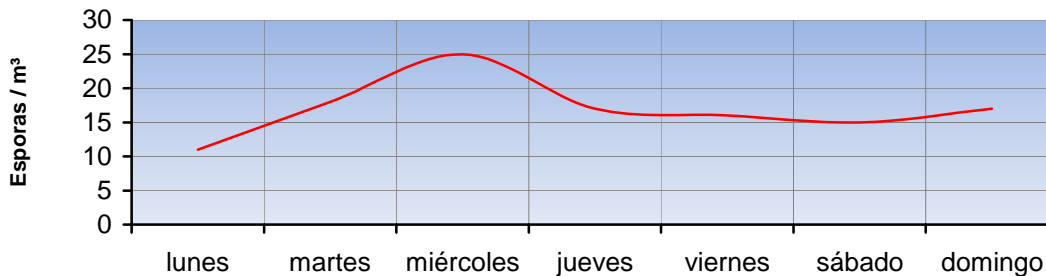


EVOLUCIÓN AEROPOLÍNICA ANUAL

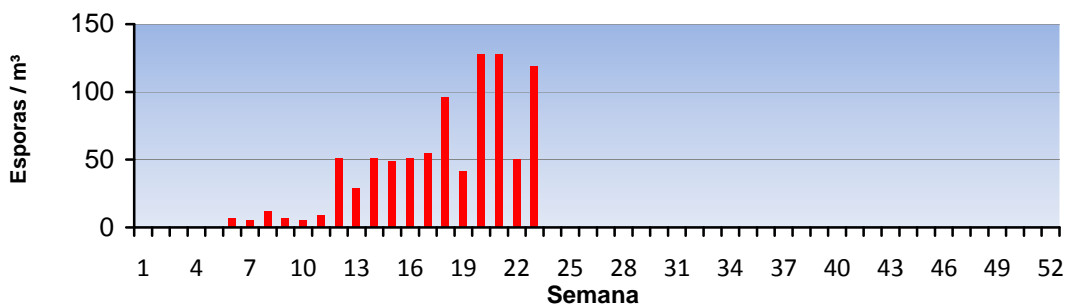


ALTERNARIA

EVOLUCIÓN SEMANAL DE ALTERNARIA



EVOLUCIÓN ANUAL DE ALTERNARIA



Punto de muestreo: Colegio San Antonio

Responsable: Francisco Javier Suárez Pérez

ANÁLISIS AEROBIOLÓGICO



VALENCIA

2016

Datos en granos/m³ de aire

| SEMANA 23 | Lunes 6-jun | Martes 7-jun | Miércoles 8-jun | Jueves 9-jun | Viernes 10-jun | Sábado 11-jun | Domingo 12-jun |
|--|----------------|-----------------|--------------------|-----------------|-------------------|------------------|-------------------|
| Apiaceae (Umbelífera) | | | | | | | 1 |
| Artemisia (Artemisa) | | | | | | | 1 |
| Betula (Abedul) | 1 | | | | | 1 | |
| Cannabis (Cáñamo) | 3 | | 3 | | 1 | | |
| Chenopodiaceae (Cenizo, salsola) | 1 | 1 | 1 | | 1 | | 4 |
| Cupressaceae (Ciprés, enebro) | 6 | | 1 | 7 | 5 | 16 | 11 |
| Cyperaceae (Juncia, lastán) | | | | 1 | | | 1 |
| Echium (Viborera) | | | | | 2 | 1 | 3 |
| Ericaceae (Brezo) | | | 2 | 2 | 1 | 2 | |
| Olea (Olivo) | 36 | 19 | 78 | 103 | 142 | 103 | 162 |
| Palmaceae (Palmeras) | | | | | | 1 | |
| Pinaceae (Pinos, cedros) | 40 | 9 | 16 | 188 | 90 | 112 | 176 |
| Plantago (Llantén) | 2 | 2 | 4 | 10 | 12 | 8 | 7 |
| Platanus (Plátano de sombra) | 1 | | 2 | | | | |
| Poaceae (Gramínea) | 6 | 9 | 13 | 38 | 28 | 35 | 39 |
| Quercus (Encina, alcornoque) | 37 | 27 | 47 | 320 | 148 | 127 | 129 |
| Rumex (Acedera) | 1 | 1 | | 8 | 7 | 7 | 6 |
| Typhaceae (Tifa) | | | 1 | 1 | | | |
| Urticaceae (Ortiga, parietaria) | 6 | 4 | 7 | 3 | 3 | 17 | 9 |
| OTROS | 2 | 1 | 1 | | 2 | 2 | 5 |
| TOTAL | 142 | 73 | 176 | 681 | 442 | 432 | 554 |
| Alternaria | 9 | 5 | 12 | 4 | 1 | 11 | 17 |

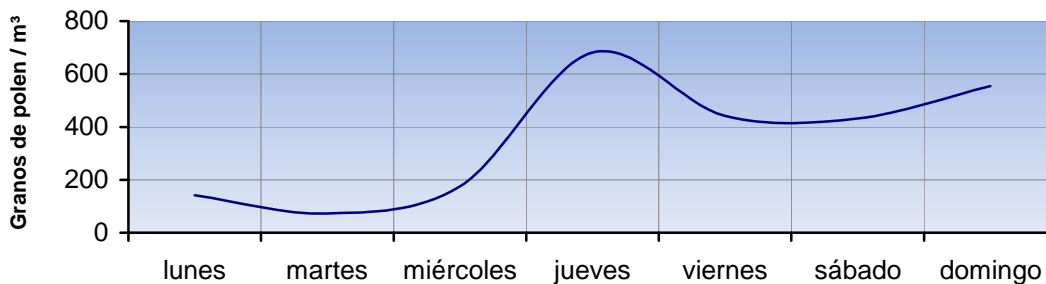
Punto de muestreo: Hospital Clínico de Valencia

Responsable: Francisco Javier Suárez Pérez

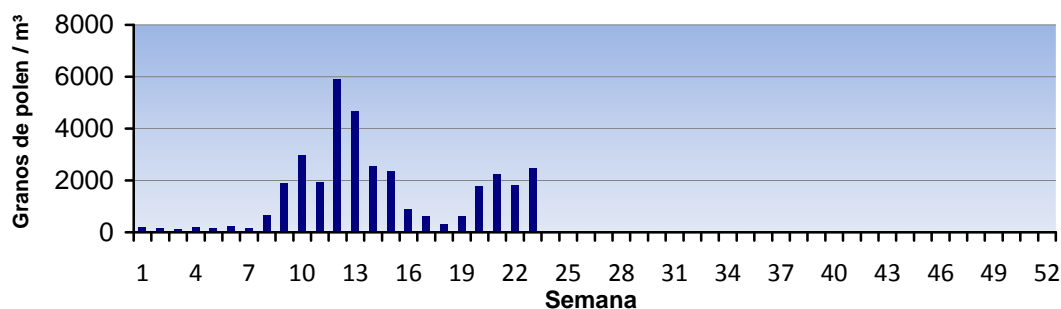
REPRESENTACIÓN GRÁFICA

POLEN

EVOLUCIÓN AEROPOLÍNICA SEMANAL

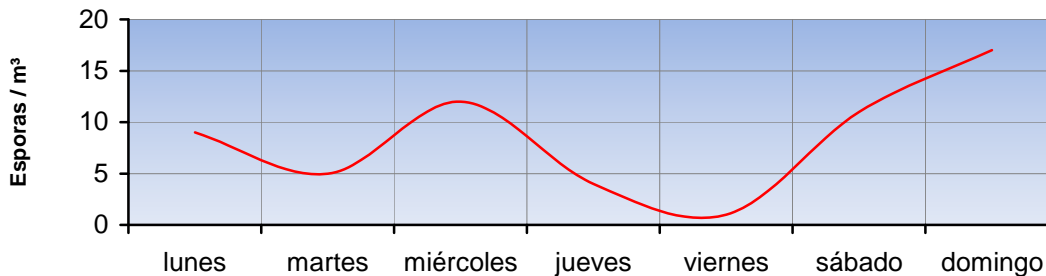


EVOLUCIÓN AEROPOLÍNICA ANUAL

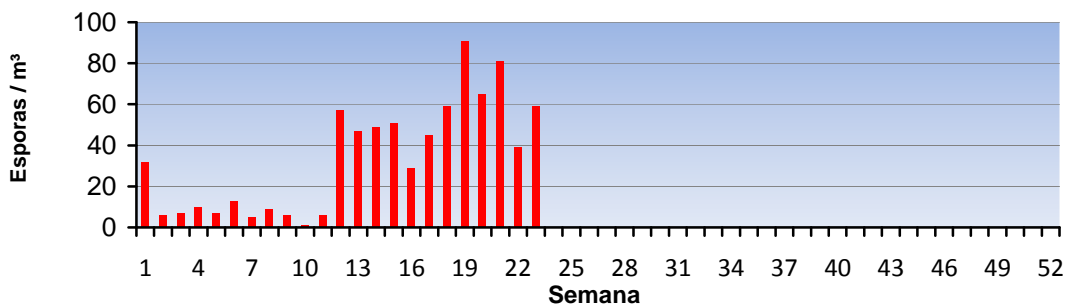


ALTERNARIA

EVOLUCIÓN SEMANAL DE ALTERNARIA



EVOLUCIÓN ANUAL DE ALTERNARIA



Punto de muestreo: Hospital Clínico de Valencia

Responsable: Francisco Javier Suárez Pérez