

# ANÁLISIS AEROBIOLÓGICO



## ALICANTE

2016

Datos en granos/m<sup>3</sup> de aire

| SEMANA 44                                  | Lunes<br>31-oct | Martes<br>1-nov | Miércoles<br>2-nov | Jueves<br>3-nov | Viernes<br>4-nov | Sábado<br>5-nov | Domingo<br>6-nov |
|--|-----------------|-----------------|--------------------|-----------------|------------------|-----------------|------------------|
| <b>Artemisia</b><br>(Artemisa)             | S               | S               | S                  |                 | 2                | 1               |                  |
| <b>Casuarina</b><br>(Pino de Australia)    | I               | I               | I                  | 17              | 44               | 6               | 11               |
| <b>Chenopodiaceae</b><br>(Cenizo, salsola) | N               | N               | N                  | 2               | 1                | 1               |                  |
| <b>Cupressaceae</b><br>(Ciprés, enebro)    |                 |                 |                    | 3               | 17               | 16              | 3                |
| <b>Liliaceae</b><br>(Liliacea)             | D               | D               | D                  |                 |                  |                 | 1                |
| <b>Olea</b><br>(Olivo)                     | A               | A               | A                  |                 |                  |                 | 1                |
| <b>Palmaceae</b><br>(Palmeras)             | T               | T               | T                  | 1               | 1                |                 | 3                |
| <b>Poaceae</b><br>(Gramínea)               | O               | O               | O                  |                 |                  | 1               |                  |
| <b>Urticaceae</b><br>(Ortiga, parietaria)  | S               | S               | S                  |                 | 2                | 1               |                  |
| <b>OTROS</b>                               |                 |                 |                    | 1               | 1                |                 |                  |
|  |                 |                 |                    |                 |                  |                 |                  |
|  |                 |                 |                    |                 |                  |                 |                  |
|  |                 |                 |                    |                 |                  |                 |                  |
|  |                 |                 |                    |                 |                  |                 |                  |
|  |                 |                 |                    |                 |                  |                 |                  |
|  |                 |                 |                    |                 |                  |                 |                  |
|  |                 |                 |                    |                 |                  |                 |                  |
|  |                 |                 |                    |                 |                  |                 |                  |
|  |                 |                 |                    |                 |                  |                 |                  |
| <b>TOTAL</b>                               | <b>0</b>        | <b>0</b>        | <b>0</b>           | <b>24</b>       | <b>68</b>        | <b>26</b>       | <b>19</b>        |
| <b>Alternaria</b>                          | <b>0</b>        | <b>0</b>        | <b>0</b>           | <b>42</b>       | <b>70</b>        | <b>26</b>       | <b>47</b>        |

**Punto de muestreo:** Hospital General Universitario de Alicante

**Responsable:** Francisco Javier Suárez Pérez

# REPRESENTACIÓN GRÁFICA

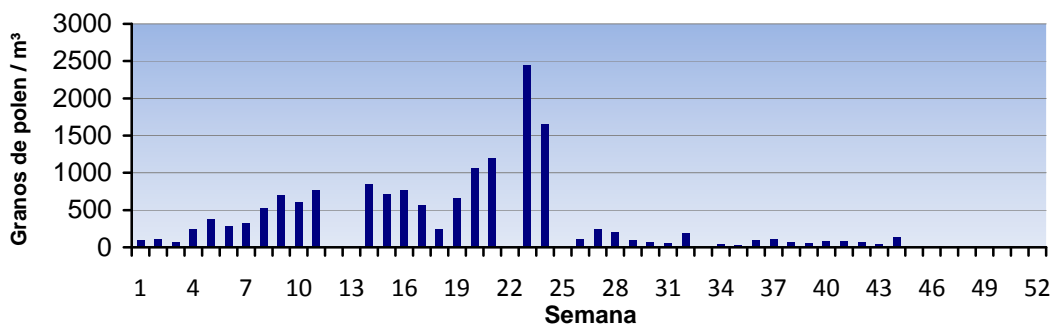


**LETI**

## EVOLUCIÓN AEROPOLÍNICA SEMANAL



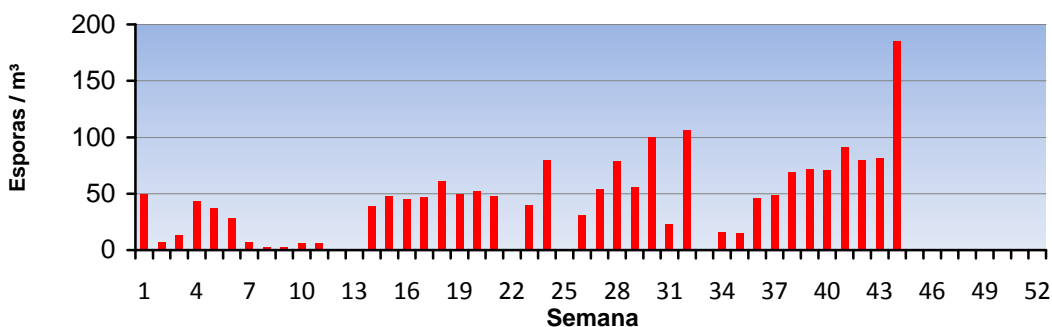
## EVOLUCIÓN AEROPOLÍNICA ANUAL



## EVOLUCIÓN SEMANAL DE ALTERNARIA



## EVOLUCIÓN ANUAL DE ALTERNARIA



POLEN  
ALTERNARIA

**Punto de muestreo:** Hospital General Universitario de Alicante

**Responsable:** Francisco Javier Suárez Pérez

# ANÁLISIS AEROBIOLÓGICO



## CASTELLÓN 2016

Datos en granos/m<sup>3</sup> de aire

| SEMANA 44                                  | Lunes<br>31-oct | Martes<br>1-nov | Miércoles<br>2-nov | Jueves<br>3-nov | Viernes<br>4-nov | Sábado<br>5-nov | Domingo<br>6-nov |
|--|-----------------|-----------------|--------------------|-----------------|------------------|-----------------|------------------|
| <b>Apiaceae</b><br>(Umbelífera)            |                 |                 |                    |                 | 1                | 1               | 1                |
| <b>Brassicaceae</b><br>(Crucífera)         | 1               |                 |                    |                 | 1                | 1               | 1                |
| <b>Casuarina</b><br>(Pino de Australia)    | 1               |                 | 1                  | 1               |                  | 2               |                  |
| <b>Chenopodiaceae</b><br>(Cenizo, salsola) | 1               |                 |                    |                 |                  | 1               |                  |
| <b>Cupressaceae</b><br>(Ciprés, enebro)    | 1               | 3               | 9                  | 6               | 14               | 16              | 8                |
| <b>Palmaceae</b><br>(Palmeras)             | 1               | 2               | 1                  |                 |                  |                 |                  |
| <b>Pinaceae</b><br>(Pinos, cedros)         |                 |                 |                    |                 |                  | 1               |                  |
| <b>Poaceae</b><br>(Gramínea)               | 1               |                 |                    |                 | 1                |                 | 1                |
| <b>Quercus</b><br>(Encina, alcornoque)     |                 |                 |                    |                 |                  |                 | 1                |
| <b>Urticaceae</b><br>(Ortiga, parietaria)  |                 | 2               | 1                  |                 |                  |                 | 1                |
|  |                 |                 |                    |                 |                  |                 |                  |
|  |                 |                 |                    |                 |                  |                 |                  |
|  |                 |                 |                    |                 |                  |                 |                  |
|  |                 |                 |                    |                 |                  |                 |                  |
|  |                 |                 |                    |                 |                  |                 |                  |
|  |                 |                 |                    |                 |                  |                 |                  |
|  |                 |                 |                    |                 |                  |                 |                  |
|  |                 |                 |                    |                 |                  |                 |                  |
|  |                 |                 |                    |                 |                  |                 |                  |
|  |                 |                 |                    |                 |                  |                 |                  |
| <b>TOTAL</b>                               | <b>6</b>        | <b>7</b>        | <b>12</b>          | <b>7</b>        | <b>17</b>        | <b>22</b>       | <b>13</b>        |
| <b>Alternaria</b>                          | 26              | 28              | 15                 | 36              | 25               | 139             | 26               |

**Punto de muestreo:** Hospital General de Castellón

**Responsable:** Francisco Javier Suárez Pérez

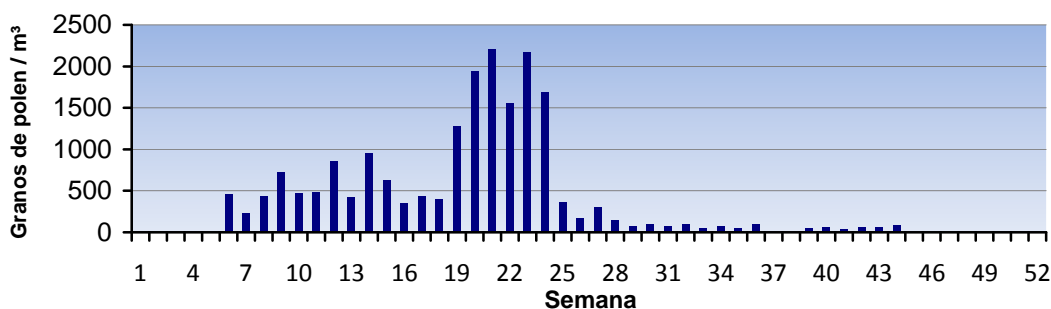
# REPRESENTACIÓN GRÁFICA



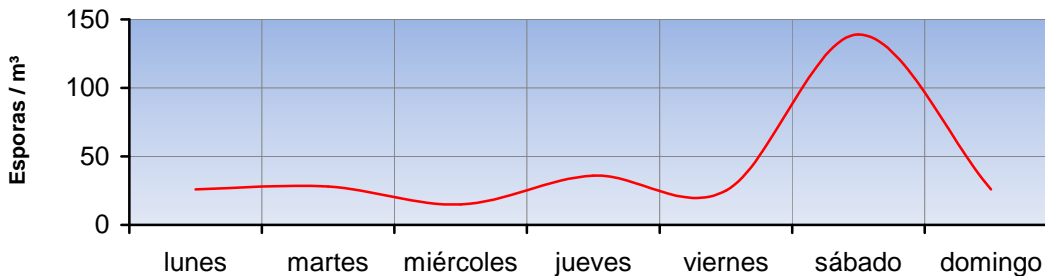
## EVOLUCIÓN AEROPOLÍNICA SEMANAL



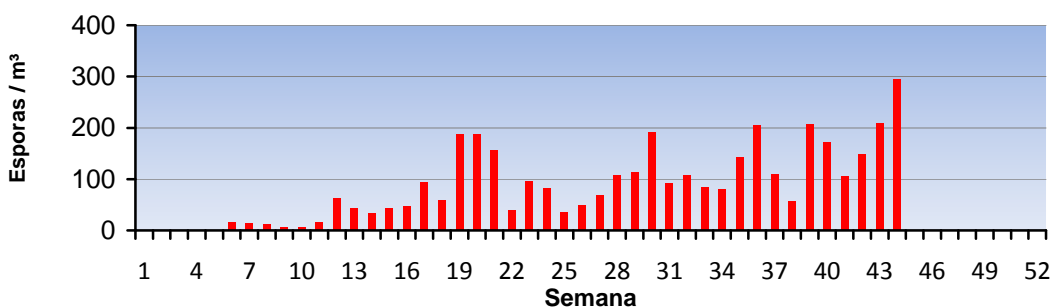
## EVOLUCIÓN AEROPOLÍNICA ANUAL



## EVOLUCIÓN SEMANAL DE ALTERNARIA



## EVOLUCIÓN ANUAL DE ALTERNARIA



Punto de muestreo: Hospital General de Castellón

Responsable: Francisco Javier Suárez Pérez

# ANÁLISIS AEROBIOLÓGICO



**PEGO**  
2016

Datos en granos/m<sup>3</sup> de aire

| <b>SEMANA 44</b>                           | Lunes<br>31-oct | Martes<br>1-nov | Miércoles<br>2-nov | Jueves<br>3-nov | Viernes<br>4-nov | Sábado<br>5-nov | Domingo<br>6-nov |
|--|-----------------|-----------------|--------------------|-----------------|------------------|-----------------|------------------|
| <b>Apiaceae</b><br>(Umbelífera)            | S               |                 |                    |                 | 1                | 1               |                  |
| <b>Brassicaceae</b><br>(Crucífera)         | I               |                 |                    |                 | 1                | 1               |                  |
| <b>Casuarina</b><br>(Pino de Australia)    | N               |                 | 4                  | 1               |                  | 2               |                  |
| <b>Ceratonia</b><br>(Algarrobo)            |                 |                 | 1                  |                 |                  |                 |                  |
| <b>Chenopodiaceae</b><br>(Cenizo, salsola) | D               |                 | 2                  |                 |                  |                 | 2                |
| <b>Compositae</b><br>(Tipo Senecio)        | A               |                 |                    |                 |                  | 1               |                  |
| <b>Cupressaceae</b><br>(Ciprés, enebro)    | T               | 1               | 21                 | 7               | 45               | 71              | 8                |
| <b>Cyperaceae</b><br>(Juncia, lastán)      | O               |                 |                    |                 |                  | 1               |                  |
| <b>Ericaceae</b><br>(Brezo)                | S               | 1               |                    |                 | 2                |                 | 2                |
| <b>Palmaceae</b><br>(Palmeras)             |                 |                 |                    |                 |                  | 1               |                  |
| <b>Pinaceae</b><br>(Pinos, cedros)         |                 |                 |                    |                 |                  | 1               |                  |
| <b>Poaceae</b><br>(Gramínea)               |                 | 1               |                    |                 |                  | 1               | 1                |
| <b>Quercus</b><br>(Encina,alcornoque)      |                 |                 |                    |                 |                  |                 | 1                |
| <b>Urticaceae</b><br>(Ortiga, parietaria)  |                 | 2               | 12                 | 2               | 11               | 3               | 1                |
| <b>OTROS</b>                               |                 |                 | 1                  |                 | 2                | 2               | 1                |
|  |                 |                 |                    |                 |                  |                 |                  |
|  |                 |                 |                    |                 |                  |                 |                  |
|  |                 |                 |                    |                 |                  |                 |                  |
|  |                 |                 |                    |                 |                  |                 |                  |
| <b>TOTAL</b>                               | <b>0</b>        | <b>5</b>        | <b>41</b>          | <b>10</b>       | <b>62</b>        | <b>85</b>       | <b>16</b>        |

|                   |   |   |    |    |    |    |    |
|-------------------|---|---|----|----|----|----|----|
| <b>Alternaria</b> | 0 | 7 | 33 | 17 | 28 | 79 | 30 |
|-------------------|---|---|----|----|----|----|----|

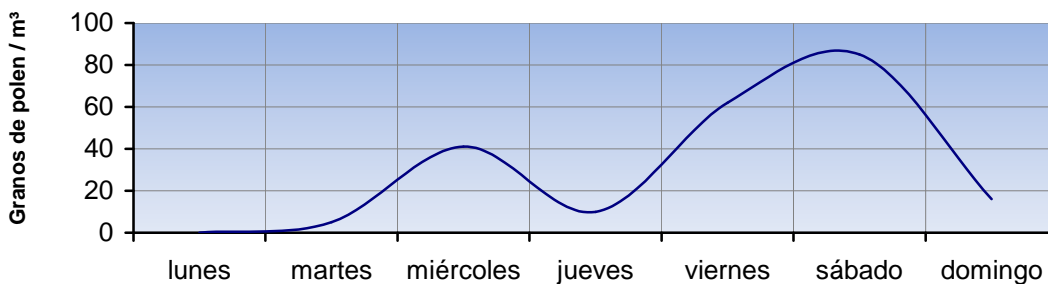
**Punto de muestreo:** Colegio San Antonio

**Responsable:** Francisco Javier Suárez Pérez

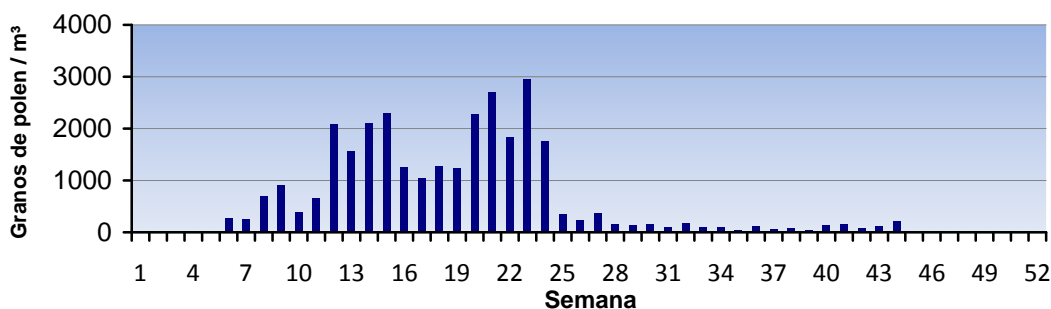
# REPRESENTACIÓN GRÁFICA



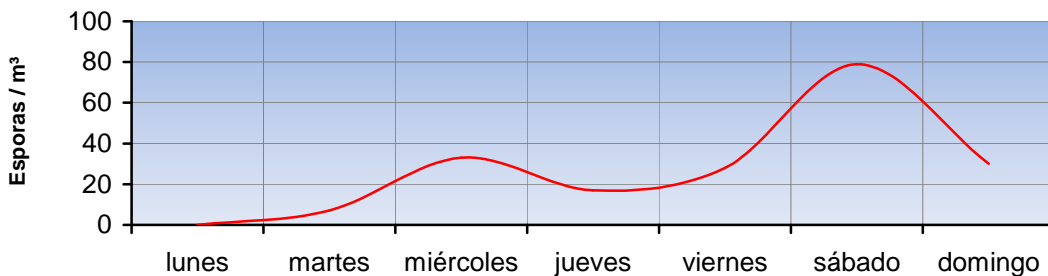
## EVOLUCIÓN AEROPOLÍNICA SEMANAL



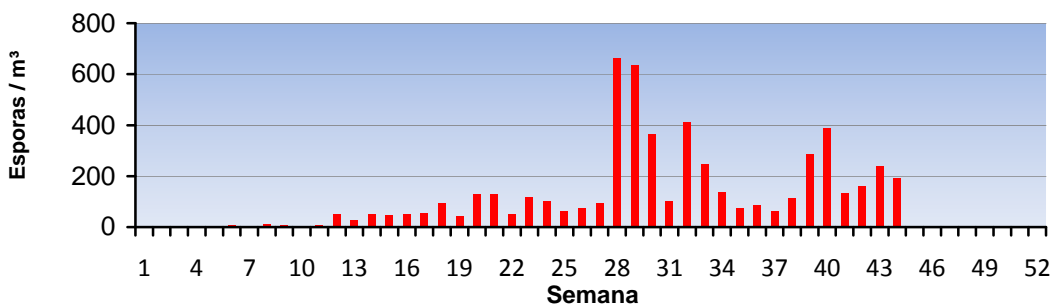
## EVOLUCIÓN AEROPOLÍNICA ANUAL



## EVOLUCIÓN SEMANAL DE ALTERNARIA



## EVOLUCIÓN ANUAL DE ALTERNARIA



Punto de muestreo: Colegio San Antonio

Responsable: Francisco Javier Suárez Pérez

# ANÁLISIS AEROBIOLÓGICO



## VALENCIA 2016

Datos en granos/m<sup>3</sup> de aire

| SEMANA 44                                  | Lunes<br>31-oct | Martes<br>1-nov | Miércoles<br>2-nov | Jueves<br>3-nov | Viernes<br>4-nov | Sábado<br>5-nov | Domingo<br>6-nov |
|--|-----------------|-----------------|--------------------|-----------------|------------------|-----------------|------------------|
| <b>Brassicaceae</b><br>(Crucifera)         |                 |                 |                    |                 |                  | 1               |                  |
| <b>Casuarina</b><br>(Pino de Australia)    | 7               | 11              | 14                 | 41              | 7                | 76              | 8                |
| <b>Ceratonia</b><br>(Algarrobo)            |                 |                 |                    |                 |                  | 2               |                  |
| <b>Chenopodiaceae</b><br>(Cenizo, salsola) | 1               |                 |                    |                 | 1                | 1               |                  |
| <b>Cupressaceae</b><br>(Ciprés, enebro)    | 3               | 8               | 49                 | 34              | 34               | 4               | 4                |
| <b>Cyperaceae</b><br>(Juncia, lastán)      | 1               |                 |                    |                 |                  | 1               |                  |
| <b>Ericaceae</b><br>(Brezo)                |                 |                 | 1                  | 1               |                  | 1               | 1                |
| <b>Juglans</b><br>(Nogal)                  |                 | 1               |                    |                 |                  |                 |                  |
| <b>Palmaceae</b><br>(Palmeras)             |                 |                 |                    |                 |                  |                 | 1                |
| <b>Platanus</b><br>(Plátano de sombra)     |                 |                 |                    |                 |                  | 3               |                  |
| <b>Poaceae</b><br>(Gramínea)               | 1               |                 |                    |                 |                  |                 | 1                |
| <b>Urticaceae</b><br>(Ortiga, parietaria)  |                 | 1               | 3                  | 3               | 3                | 1               | 1                |
| <b>OTROS</b>                               |                 | 2               |                    | 2               | 2                | 3               | 1                |
|  |                 |                 |                    |                 |                  |                 |                  |
|  |                 |                 |                    |                 |                  |                 |                  |
|  |                 |                 |                    |                 |                  |                 |                  |
|  |                 |                 |                    |                 |                  |                 |                  |
|  |                 |                 |                    |                 |                  |                 |                  |
|  |                 |                 |                    |                 |                  |                 |                  |
|  |                 |                 |                    |                 |                  |                 |                  |
| <b>TOTAL</b>                               | <b>13</b>       | <b>23</b>       | <b>67</b>          | <b>81</b>       | <b>47</b>        | <b>93</b>       | <b>17</b>        |

|                   |    |    |    |    |    |    |    |
|-------------------|----|----|----|----|----|----|----|
| <b>Alternaria</b> | 18 | 17 | 29 | 42 | 33 | 59 | 22 |
|-------------------|----|----|----|----|----|----|----|

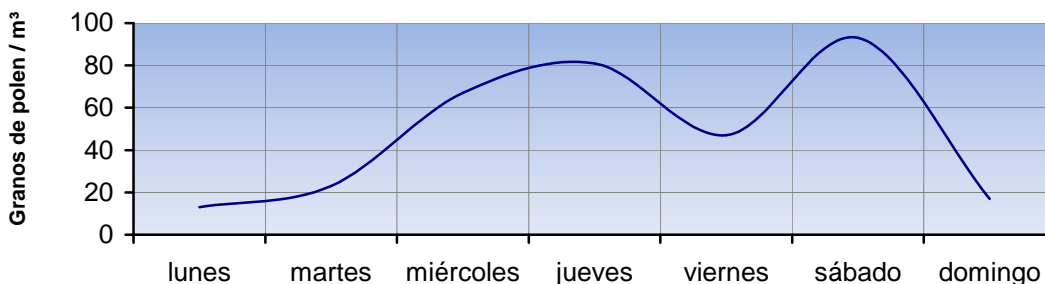
**Punto de muestreo:** Hospital Clínico de Valencia

**Responsable:** Francisco Javier Suárez Pérez

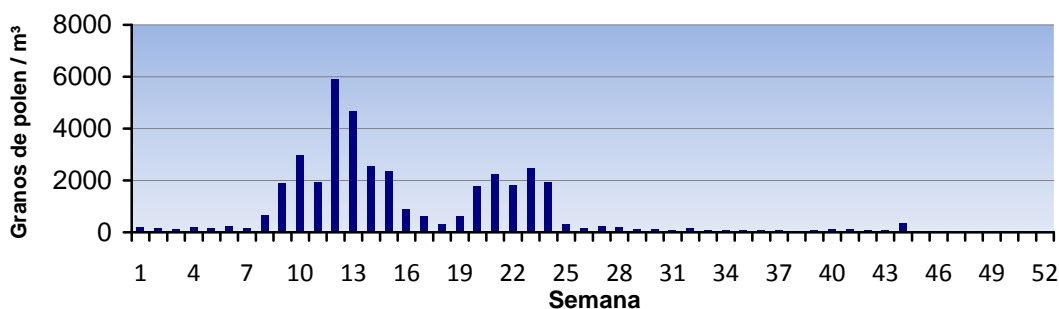
# REPRESENTACIÓN GRÁFICA



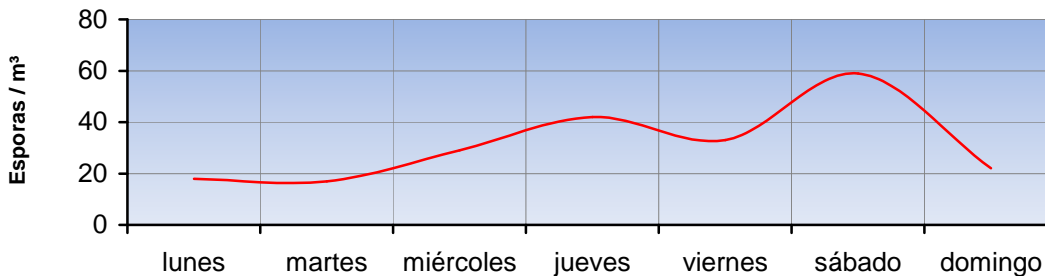
## EVOLUCIÓN AEROPOLÍNICA SEMANAL



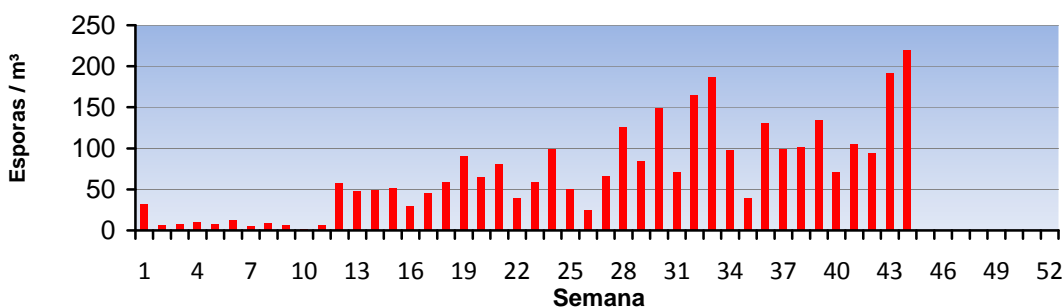
## EVOLUCIÓN AEROPOLÍNICA ANUAL



## EVOLUCIÓN SEMANAL DE ALTERNARIA



## EVOLUCIÓN ANUAL DE ALTERNARIA



POLEN  
ALTERNARIA

Punto de muestreo: Hospital Clínico de Valencia

Responsable: Francisco Javier Suárez Pérez