

# ANÁLISIS AEROBIOLÓGICO



## CASTELLÓN

2016

Datos en granos/m<sup>3</sup> de aire

| SEMANA 33                                  | Lunes<br>15-ago | Martes<br>16-ago | Miércoles<br>17-ago | Jueves<br>18-ago | Viernes<br>19-ago | Sábado<br>20-ago | Domingo<br>21-ago |
|--|-----------------|------------------|---------------------|------------------|-------------------|------------------|-------------------|
| <b>Apiaceae</b><br>(Umbelífera)            | S               |                  |                     |                  |                   | 1                |                   |
| <b>Chenopodiaceae</b><br>(Cenizo, salsola) | I               | 1                | 1                   | 6                | 2                 | 2                | 6                 |
| <b>Cyperaceae</b><br>(Juncia, lastán)      | N               |                  |                     |                  | 1                 |                  | 1                 |
| <b>Myrtaceae</b><br>(Eucalipto, mirto)     |                 | 1                |                     |                  |                   |                  |                   |
| <b>Olea</b><br>(Olivo)                     | D               | 1                |                     | 2                | 2                 | 1                |                   |
| <b>Palmaceae</b><br>(Palmeras)             | A               |                  | 1                   |                  |                   |                  |                   |
| <b>Pinaceae</b><br>(Pinos, cedros)         | T               |                  | 1                   | 1                |                   |                  |                   |
| <b>Poaceae</b><br>(Gramínea)               | O               |                  |                     | 1                |                   |                  | 1                 |
| <b>Quercus</b><br>(Encina, alcornoque)     | S               | 1                | 2                   | 1                |                   | 1                | 1                 |
| <b>Urticaceae</b><br>(Ortiga, parietaria)  |                 |                  | 1                   |                  |                   |                  | 1                 |
| <b>OTROS</b>                               |                 | 1                |                     |                  | 1                 | 1                | 1                 |
|  |                 |                  |                     |                  |                   |                  |                   |
|  |                 |                  |                     |                  |                   |                  |                   |
|  |                 |                  |                     |                  |                   |                  |                   |
|  |                 |                  |                     |                  |                   |                  |                   |
|  |                 |                  |                     |                  |                   |                  |                   |
|  |                 |                  |                     |                  |                   |                  |                   |
|  |                 |                  |                     |                  |                   |                  |                   |
|  |                 |                  |                     |                  |                   |                  |                   |
| <b>TOTAL</b>                               | <b>0</b>        | <b>5</b>         | <b>6</b>            | <b>11</b>        | <b>6</b>          | <b>6</b>         | <b>11</b>         |

|                   |   |    |    |    |    |    |   |
|-------------------|---|----|----|----|----|----|---|
| <b>Alternaria</b> | 0 | 21 | 17 | 12 | 13 | 12 | 9 |
|-------------------|---|----|----|----|----|----|---|

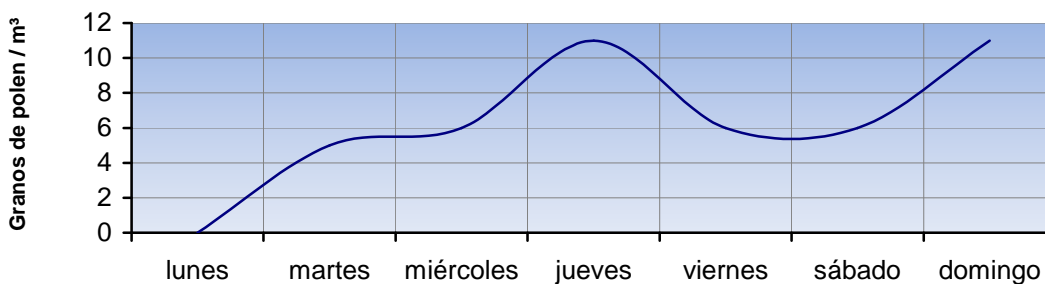
**Punto de muestreo:** Hospital General de Castellón

**Responsable:** Francisco Javier Suárez Pérez

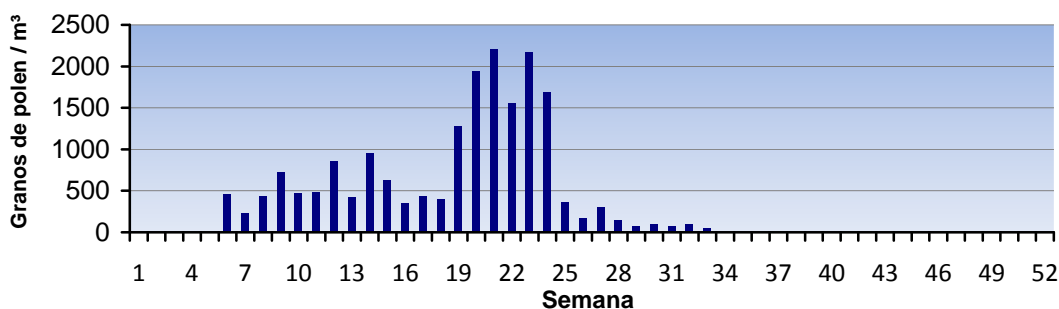
# REPRESENTACIÓN GRÁFICA



## EVOLUCIÓN AEROPOLÍNICA SEMANAL



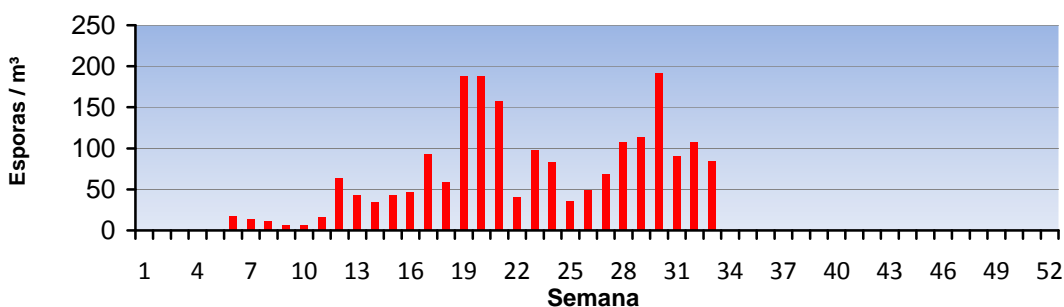
## EVOLUCIÓN AEROPOLÍNICA ANUAL



## EVOLUCIÓN SEMANAL DE ALTERNARIA



## EVOLUCIÓN ANUAL DE ALTERNARIA



POLEN

ALTERNARIA

Punto de muestreo: Hospital General de Castellón

Responsable: Francisco Javier Suárez Pérez

# ANÁLISIS AEROBIOLÓGICO



**PEGO**  
2016

Datos en granos/m<sup>3</sup> de aire

| <b>SEMANA 33</b>                           | Lunes<br>15-ago | Martes<br>16-ago | Miércoles<br>17-ago | Jueves<br>18-ago | Viernes<br>19-ago | Sábado<br>20-ago | Domingo<br>21-ago |
|--|-----------------|------------------|---------------------|------------------|-------------------|------------------|-------------------|
| <b>Apiaceae</b><br>(Umbelífera)            |                 |                  |                     | 1                |                   |                  |                   |
| <b>Cannabis</b><br>(Cáñamo)                |                 |                  | 1                   |                  |                   |                  |                   |
| <b>Castanea</b><br>(Castaño)               |                 |                  | 1                   |                  |                   |                  |                   |
| <b>Chenopodiaceae</b><br>(Cenizo, salsola) | 3               | 1                | 1                   | 8                | 5                 | 3                | 9                 |
| <b>Compositae</b><br>(Tipo Senecio)        |                 |                  |                     | 1                |                   |                  |                   |
| <b>Myrtaceae</b><br>(Eucalipto, mirto)     |                 |                  |                     |                  |                   |                  | 1                 |
| <b>Olea</b><br>(Olivo)                     | 2               | 1                | 1                   | 1                | 2                 | 1                | 2                 |
| <b>Palmaceae</b><br>(Palmeras)             |                 | 3                |                     |                  | 2                 |                  |                   |
| <b>Pinaceae</b><br>(Pinos, cedros)         | 1               |                  | 1                   | 1                |                   |                  |                   |
| <b>Plantago</b><br>(Llantén)               | 1               |                  |                     |                  |                   |                  |                   |
| <b>Poaceae</b><br>(Gramínea)               | 4               |                  |                     | 6                | 2                 | 3                | 1                 |
| <b>Quercus</b><br>(Encina,alcornoque)      | 3               |                  | 1                   | 1                |                   |                  |                   |
| <b>Urticaceae</b><br>(Ortiga, parietaria)  | 7               | 1                | 5                   | 2                | 3                 |                  | 3                 |
| <b>OTROS</b>                               |                 |                  |                     | 2                |                   | 2                |                   |
|  |                 |                  |                     |                  |                   |                  |                   |
|  |                 |                  |                     |                  |                   |                  |                   |
|  |                 |                  |                     |                  |                   |                  |                   |
|  |                 |                  |                     |                  |                   |                  |                   |
|  |                 |                  |                     |                  |                   |                  |                   |
| <b>TOTAL</b>                               | <b>21</b>       | <b>6</b>         | <b>11</b>           | <b>23</b>        | <b>14</b>         | <b>9</b>         | <b>16</b>         |

|                   |    |    |    |    |    |    |    |
|-------------------|----|----|----|----|----|----|----|
| <b>Alternaria</b> | 75 | 55 | 21 | 15 | 34 | 28 | 20 |
|-------------------|----|----|----|----|----|----|----|

**Punto de muestreo:** Colegio San Antonio

**Responsable:** Francisco Javier Suárez Pérez

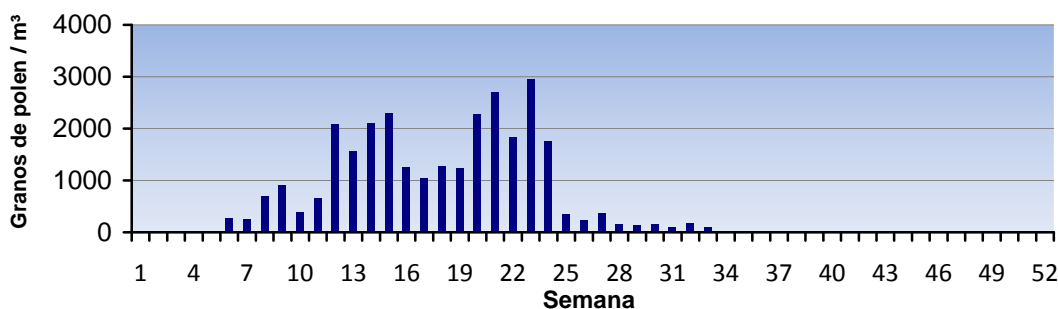
# REPRESENTACIÓN GRÁFICA



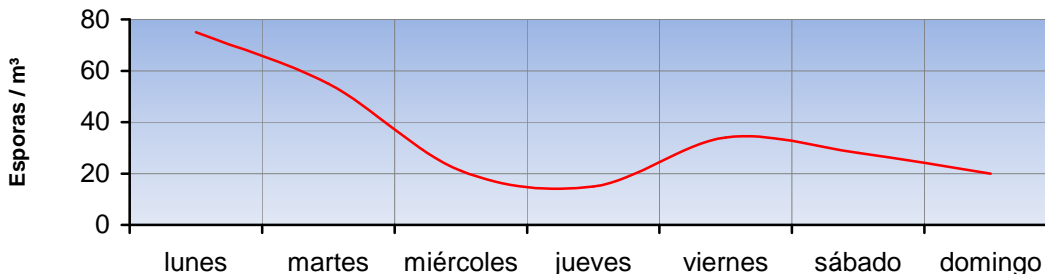
## EVOLUCIÓN AEROPOLÍNICA SEMANAL



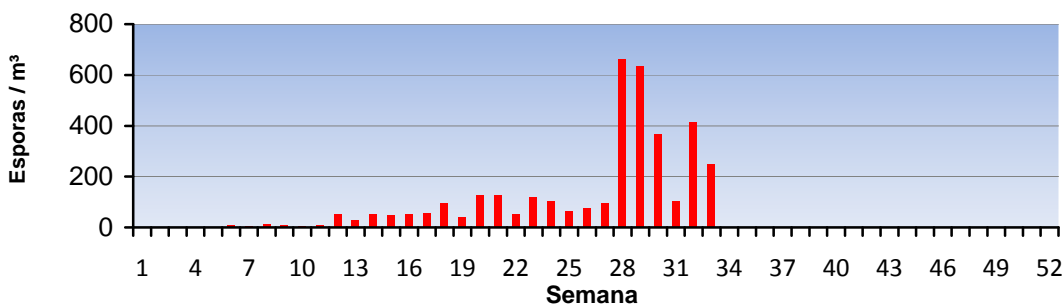
## EVOLUCIÓN AEROPOLÍNICA ANUAL



## EVOLUCIÓN SEMANAL DE ALTERNARIA



## EVOLUCIÓN ANUAL DE ALTERNARIA



POLEN

ALTERNARIA

Punto de muestreo: Colegio San Antonio

Responsable: Francisco Javier Suárez Pérez

# ANÁLISIS AEROBIOLÓGICO



## VALENCIA

2016

Datos en granos/m<sup>3</sup> de aire

| SEMANA 33                                  | Lunes<br>15-ago | Martes<br>16-ago | Miércoles<br>17-ago | Jueves<br>18-ago | Viernes<br>19-ago | Sábado<br>20-ago | Domingo<br>21-ago |
|--|-----------------|------------------|---------------------|------------------|-------------------|------------------|-------------------|
| <b>Apiaceae</b><br>(Umbelífera)            |                 |                  |                     |                  |                   | 1                |                   |
| <b>Artemisia</b><br>(Artemisa)             |                 |                  | 1                   |                  |                   |                  |                   |
| <b>Cannabis</b><br>(Cáñamo)                |                 | 1                |                     |                  |                   |                  |                   |
| <b>Castanea</b><br>(Castaño)               | 2               |                  |                     |                  |                   |                  |                   |
| <b>Chenopodiaceae</b><br>(Cenizo, salsola) | 3               | 1                | 5                   | 6                | 5                 | 3                | 7                 |
| <b>Compositae</b><br>(Tipo Senecio)        |                 |                  |                     |                  | 1                 | 1                |                   |
| <b>Cyperaceae</b><br>(Juncia, lastán)      |                 |                  |                     | 1                |                   |                  |                   |
| <b>Ligustrum</b><br>(Aligustre)            |                 |                  |                     |                  |                   |                  | 1                 |
| <b>Myrtaceae</b><br>(Eucalipto, mirto)     |                 |                  |                     | 1                |                   |                  |                   |
| <b>Olea</b><br>(Olivo)                     | 1               |                  | 2                   | 1                | 2                 | 1                |                   |
| <b>Palmaceae</b><br>(Palmeras)             | 2               | 2                | 3                   | 1                | 1                 | 1                | 1                 |
| <b>Pinaceae</b><br>(Pinos, cedros)         |                 |                  | 1                   | 3                | 2                 |                  |                   |
| <b>Plantago</b><br>(Llantén)               |                 |                  |                     |                  | 1                 |                  |                   |
| <b>Platanus</b><br>(Plátano de sombra)     | 2               |                  |                     |                  |                   |                  |                   |
| <b>Poaceae</b><br>(Gramínea)               | 1               |                  | 1                   | 1                |                   | 1                | 3                 |
| <b>Quercus</b><br>(Encina, alcornoque)     | 1               |                  | 1                   |                  |                   | 2                |                   |
| <b>Urticaceae</b><br>(Ortiga, parietaria)  | 3               |                  |                     | 1                | 1                 |                  |                   |
| <b>OTROS</b>                               |                 | 1                |                     | 1                |                   | 1                |                   |
|  |                 |                  |                     |                  |                   |                  |                   |
|  |                 |                  |                     |                  |                   |                  |                   |
| <b>TOTAL</b>                               | <b>15</b>       | <b>5</b>         | <b>14</b>           | <b>16</b>        | <b>13</b>         | <b>11</b>        | <b>12</b>         |

|                   |    |    |    |    |    |   |    |
|-------------------|----|----|----|----|----|---|----|
| <b>Alternaria</b> | 34 | 69 | 23 | 13 | 25 | 6 | 16 |
|-------------------|----|----|----|----|----|---|----|

**Punto de muestreo:** Hospital Clínico de Valencia

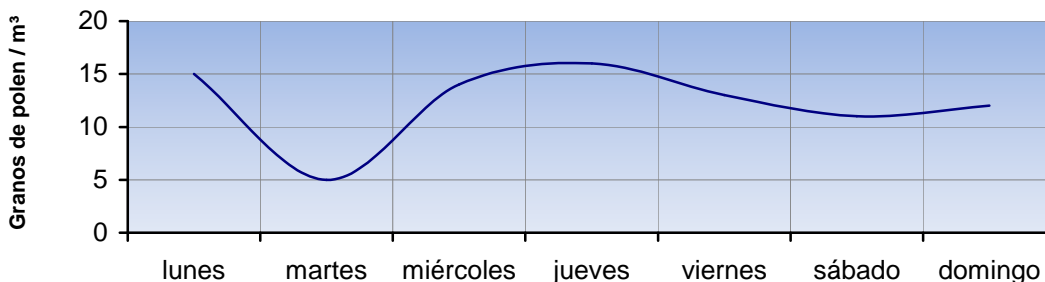
**Responsable:** Francisco Javier Suárez Pérez

# REPRESENTACIÓN GRÁFICA

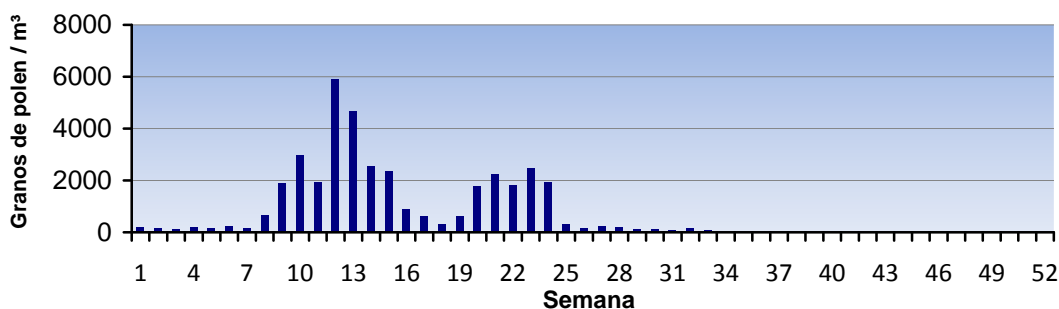


**LETI**

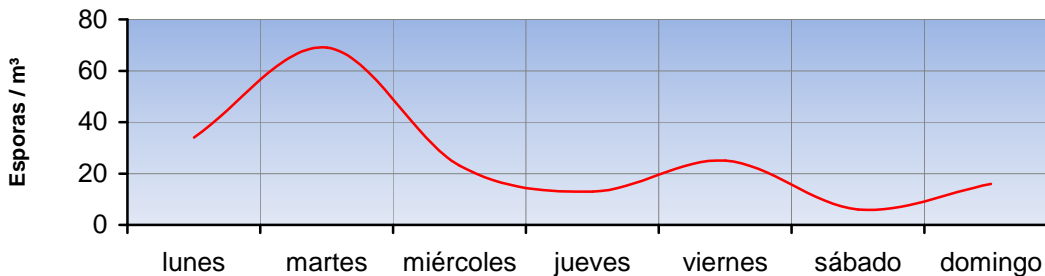
## EVOLUCIÓN AEROPOLÍNICA SEMANAL



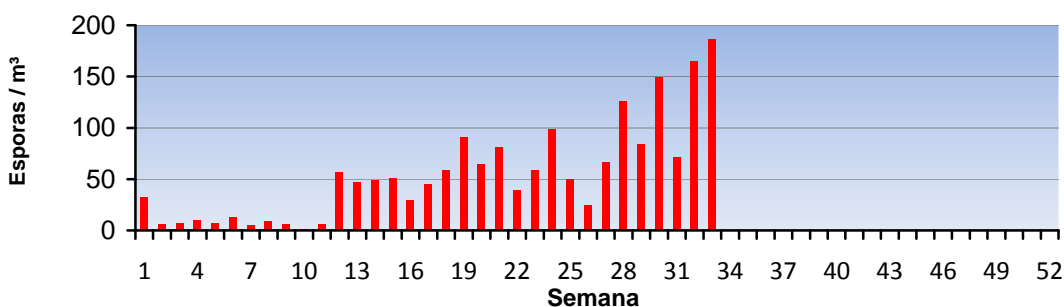
## EVOLUCIÓN AEROPOLÍNICA ANUAL



## EVOLUCIÓN SEMANAL DE ALTERNARIA



## EVOLUCIÓN ANUAL DE ALTERNARIA



POLEN

ALTERNARIA

**Punto de muestreo:** Hospital Clínico de Valencia

**Responsable:** Francisco Javier Suárez Pérez