

ANÁLISIS AEROBIOLÓGICO



ALICANTE 2017

Datos en granos/m³ de aire

| SEMANA 46 | Lunes 13-nov. | Martes 14-nov. | Miércoles 15-nov. | Jueves 16-nov. | Viernes 17-nov. | Sábado 18-nov. | Domingo 19-nov. |
|---|------------------|-------------------|----------------------|-------------------|--------------------|-------------------|--------------------|
| Amaranthaceae (Cenizo, salsola) | 1 | | 2 | 1 | 1 | | |
| Artemisia (Artemisa) | 1 | 4 | 2 | 1 | | 1 | |
| Casuarina (Pino de Australia) | 2 | 1 | 2 | | | 1 | 2 |
| Compositae (Tipo <i>Senecio</i>) | 1 | | | | | | |
| Cupressaceae (Ciprés, enebro) | 35 | 11 | 3 | 1 | 4 | 3 | 4 |
| Ericaceae (Brezo) | 1 | | | | | | |
| Palmae (Palmeras) | 2 | | 1 | 1 | | | 1 |
| Poaceae (Gramínea) | | | | | | | 1 |
| Quercus (Encina, alcornoque) | | 1 | | | | | |
| Urticaceae (Ortiga, parietaria) | | 1 | | | | 1 | |
| | | | | | | | |
| | | | | | | | |
| | | | | | | | |
| | | | | | | | |
| | | | | | | | |
| | | | | | | | |
| | | | | | | | |
| | | | | | | | |
| | | | | | | | |
| | | | | | | | |
| TOTAL | 43 | 18 | 10 | 4 | 5 | 6 | 8 |
| Alternaria | 18 | 8 | 3 | 10 | 5 | 4 | 5 |

Punto de muestreo: Hospital General Universitario de Alicante

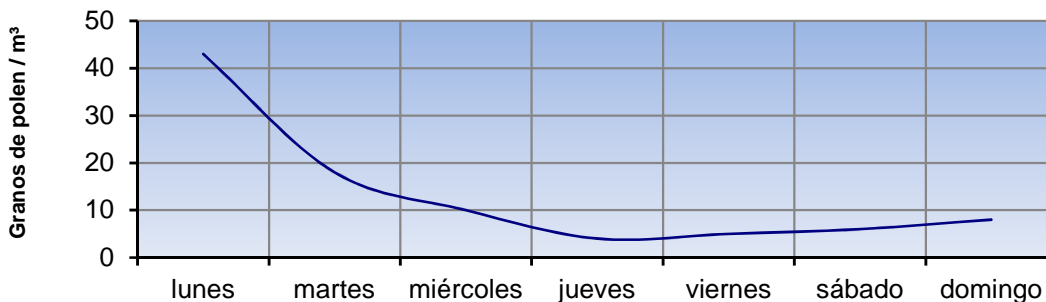
Responsable: Francisco Javier Suárez Pérez

REPRESENTACIÓN GRÁFICA

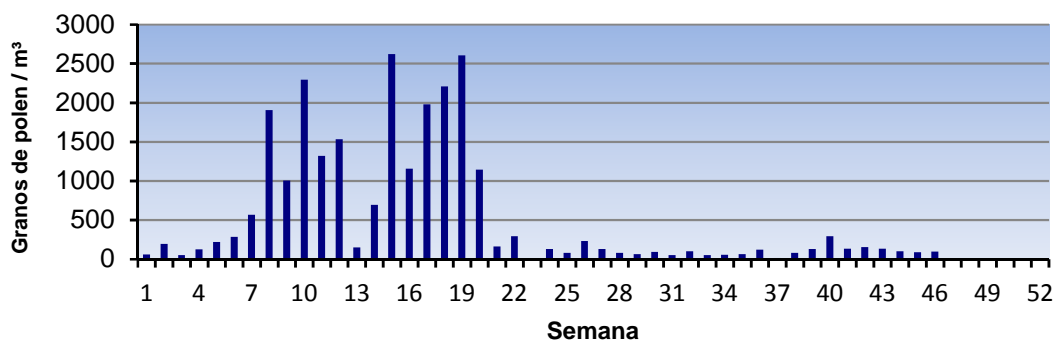


LETI

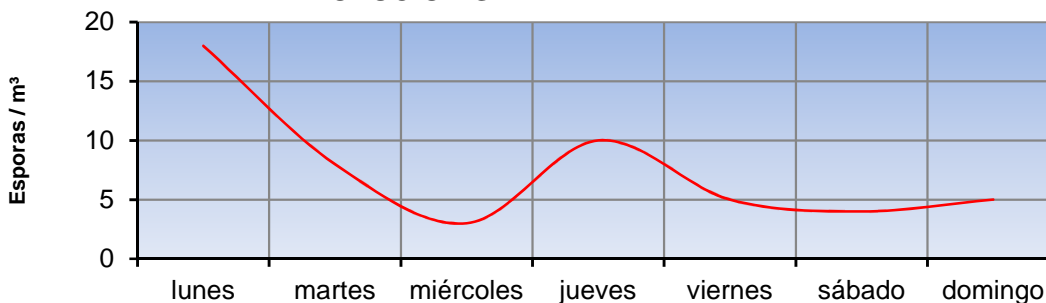
EVOLUCIÓN AEROPOLÍNICA SEMANAL



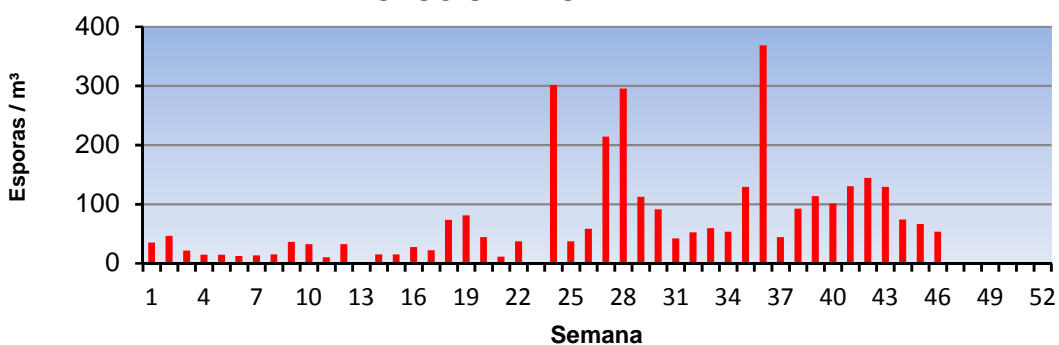
EVOLUCIÓN AEROPOLÍNICA ANUAL



EVOLUCIÓN SEMANAL DE ALTERNARIA



EVOLUCIÓN ANUAL DE ALTERNARIA



Punto de muestreo: Hospital General Universitario de Alicante

Responsable: Francisco Javier Suárez Pérez

ANÁLISIS AEROBIOLÓGICO



CASTELLÓN 2017

Datos en granos/m³ de aire

| SEMANA 46 | Lunes 13-nov. | Martes 14-nov. | Miércoles 15-nov. | Jueves 16-nov. | Viernes 17-nov. | Sábado 18-nov. | Domingo 9-nov. |
|---|------------------|-------------------|----------------------|-------------------|--------------------|-------------------|-------------------|
| Apiaceae (Umbelífera) | 2 | | | | | | |
| Artemisia (Artemisa) | 6 | 1 | 2 | 1 | 2 | 1 | 7 |
| Casuarina (Pino de Australia) | | | | | 1 | | 2 |
| Cupressaceae (Ciprés, enebro) | 4 | | 1 | 1 | 1 | 6 | 4 |
| Cyperaceae (Juncia, lastán) | | | | 1 | | | |
| Plantago (Llantén) | | | | 1 | | | |
| Quercus (Encina, alcornoque) | | | | | | 1 | |
| Urticaceae (Ortiga, parietaria) | 2 | | | | 1 | 1 | |
| OTROS | 1 | | | | | | |
| | | | | | | | |
| | | | | | | | |
| | | | | | | | |
| | | | | | | | |
| | | | | | | | |
| | | | | | | | |
| | | | | | | | |
| | | | | | | | |
| | | | | | | | |
| | | | | | | | |
| | | | | | | | |
| TOTAL | 15 | 1 | 3 | 4 | 5 | 9 | 13 |
| Alternaria | 28 | 7 | 3 | 4 | 2 | 2 | 3 |

Punto de muestreo: Hospital General de Castellón

Responsable: Francisco Javier Suárez Pérez

REPRESENTACIÓN GRÁFICA

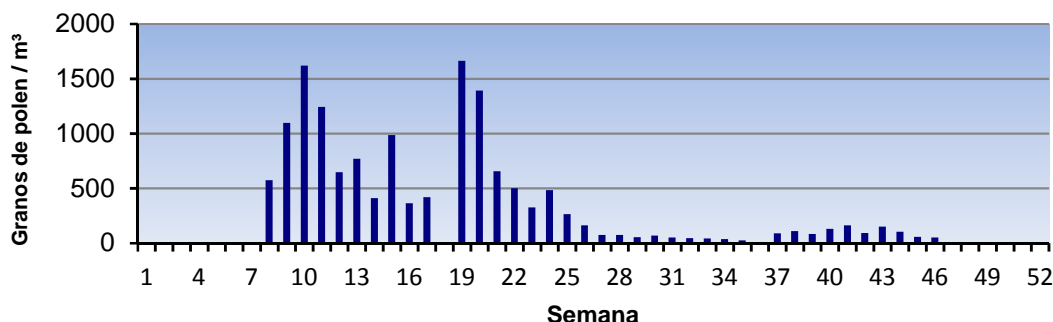


LETI

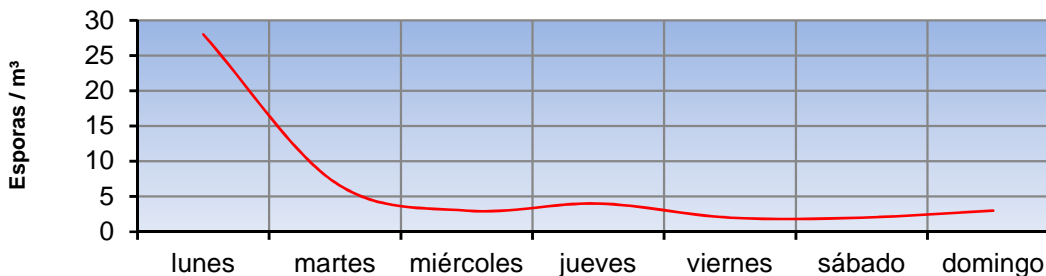
EVOLUCIÓN AEROPOLÍNICA SEMANAL



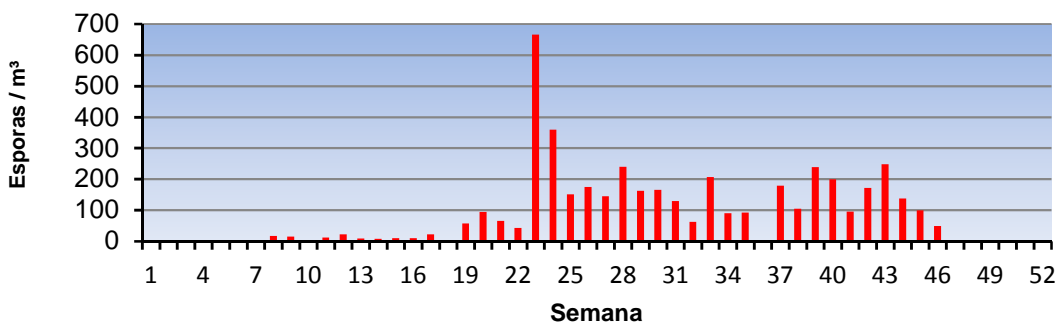
EVOLUCIÓN AEROPOLÍNICA ANUAL



EVOLUCIÓN SEMANAL DE ALTERNARIA



EVOLUCIÓN ANUAL DE ALTERNARIA



Punto de muestreo: Hospital General de Castellón

Responsable: Francisco Javier Suárez Pérez

ANÁLISIS AEROBIOLÓGICO



PEGO
2017

Datos en granos/m³ de aire

| SEMANA 46 | Lunes 13-nov. | Martes 14-nov. | Miércoles 15-nov. | Jueves 16-nov. | Viernes 17-nov. | Sábado 18-nov. | Domingo 19-nov. |
|---|------------------|-------------------|----------------------|-------------------|--------------------|-------------------|--------------------|
| Amaranthaceae (Cenizo, salsola) | | 2 | | | | | |
| Artemisia (Artemisa) | 5 | 7 | 1 | 1 | 1 | 2 | |
| Brassicaceae (Crucífera) | | | | | 1 | 1 | |
| Casuarina (Pino de Australia) | | | | | | | 1 |
| Compositae (Tipo <i>Senecio</i>) | | 1 | | | | | 1 |
| Cupressaceae (Ciprés, enebro) | 14 | 3 | 1 | 2 | 1 | 4 | 8 |
| Ericaceae (Brezo) | 1 | | 1 | | | | |
| Palmae (Palmeras) | | | | | 1 | | |
| Pinaceae (Pino, cedro) | 1 | | 1 | | | | |
| Poaceae (Gramínea) | 1 | 1 | | 1 | | | |
| Urticaceae (Ortiga, parietaria) | 1 | | 1 | 1 | 2 | | 2 |
| OTROS | 1 | 2 | | | 1 | | |
| | | | | | | | |
| | | | | | | | |
| | | | | | | | |
| | | | | | | | |
| | | | | | | | |
| | | | | | | | |
| | | | | | | | |
| TOTAL | 24 | 16 | 5 | 5 | 7 | 7 | 12 |

| | | | | | | | |
|-------------------|----|---|---|---|---|---|---|
| Alternaria | 11 | 3 | 3 | 6 | 2 | 1 | 3 |
|-------------------|----|---|---|---|---|---|---|

Punto de muestreo: Colegio San Antonio

Responsable: Francisco Javier Suárez Pérez

REPRESENTACIÓN GRÁFICA

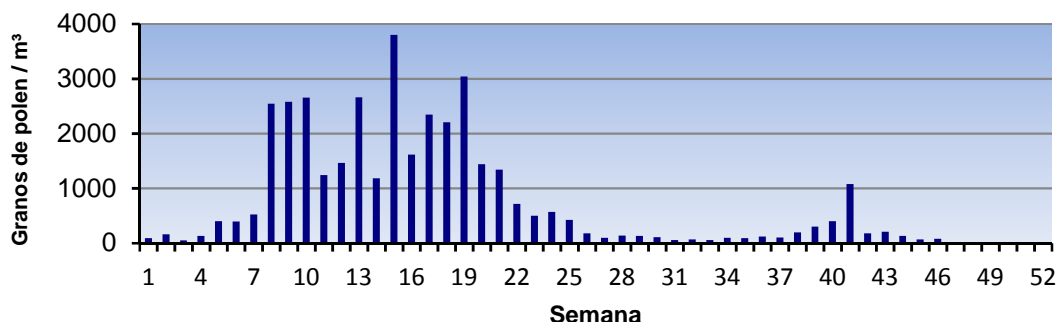


LETI

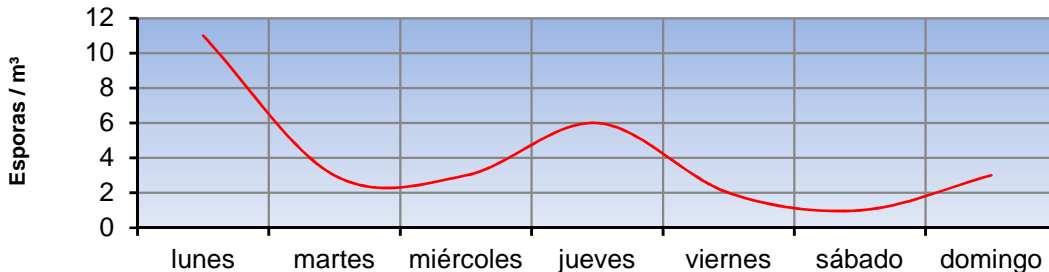
EVOLUCIÓN AEROPOLÍNICA SEMANAL



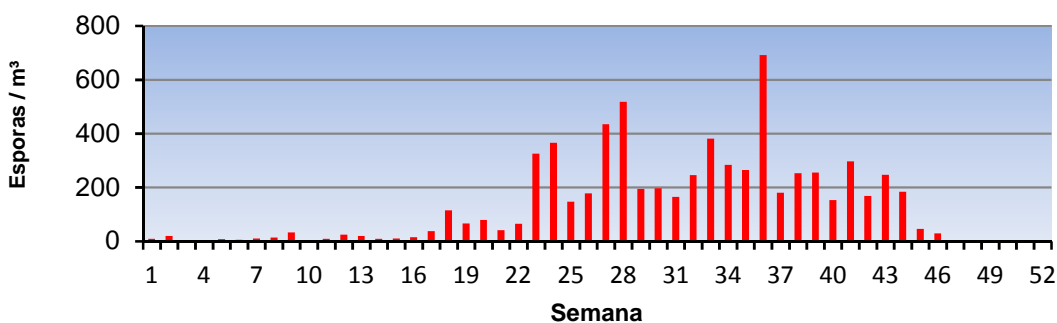
EVOLUCIÓN AEROPOLÍNICA ANUAL



EVOLUCIÓN SEMANAL DE ALTERNARIA



EVOLUCIÓN ANUAL DE ALTERNARIA



POLEN
ALTERNARIA

Punto de muestreo: Colegio San Antonio

Responsable: Francisco Javier Suárez Pérez

ANÁLISIS AEROBIOLÓGICO



VALENCIA 2017

Datos en granos/m³ de aire

| SEMANA 46 | Lunes 13-nov. | Martes 14-nov. | Miércoles 15-nov. | Jueves 16-nov. | Viernes 17-nov. | Sábado 18-nov. | Domingo 19-nov. |
|---|------------------|-------------------|----------------------|-------------------|--------------------|-------------------|--------------------|
| Amaranthaceae (Cenizo, salsola) | | | | | | 1 | |
| Artemisia (Artemisa) | 1 | | 2 | | | 2 | 1 |
| Casuarina (Pino de Australia) | 1 | | | 1 | 2 | 1 | 1 |
| Cupressaceae (Ciprés, enebro) | 7 | 1 | 1 | | | 5 | 4 |
| Palmae (Palmeras) | 2 | 1 | | | | 1 | 1 |
| Pinaceae (Pino, cedro) | 1 | | | | | | |
| Poaceae (Gramínea) | 1 | | | | | | 1 |
| Quercus (Encina, alcornoque) | | | | | | 1 | |
| Urticaceae (Ortiga, parietaria) | | | | | 1 | | 1 |
| OTROS | 1 | | 1 | | | | |
| | | | | | | | |
| | | | | | | | |
| | | | | | | | |
| | | | | | | | |
| | | | | | | | |
| | | | | | | | |
| | | | | | | | |
| | | | | | | | |
| | | | | | | | |
| | | | | | | | |
| TOTAL | 14 | 2 | 4 | 1 | 3 | 11 | 9 |
| Alternaria | 8 | 0 | 6 | 1 | 6 | 2 | 1 |

Punto de muestreo: Hospital Clínico de Valencia

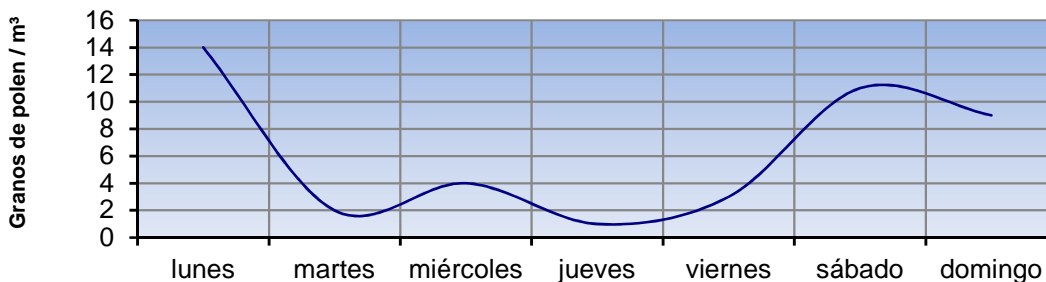
Responsable: Francisco Javier Suárez Pérez

REPRESENTACIÓN GRÁFICA

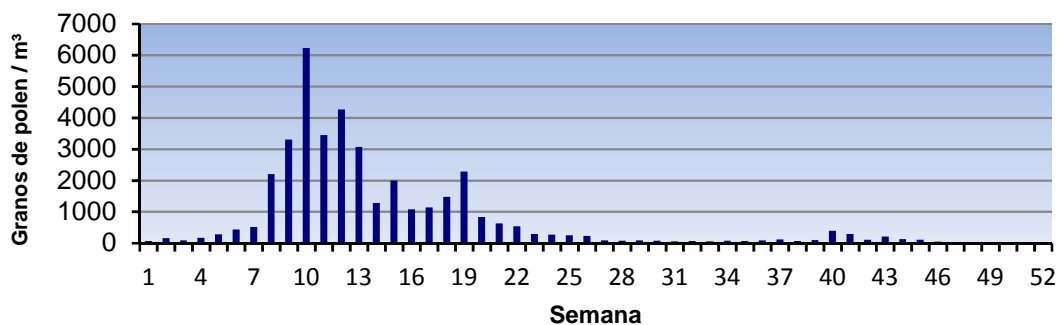


LETI

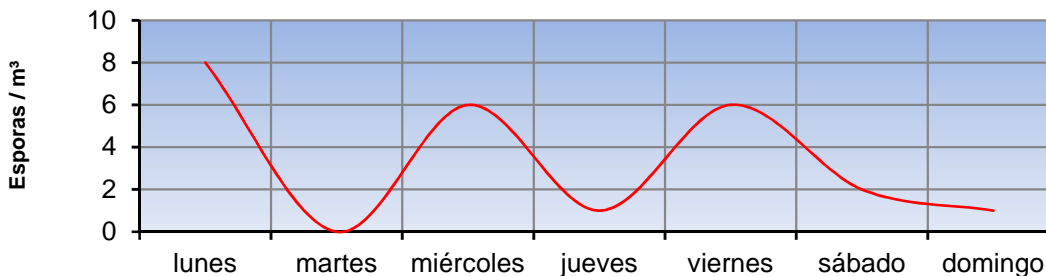
EVOLUCIÓN AEROPOLÍNICA SEMANAL



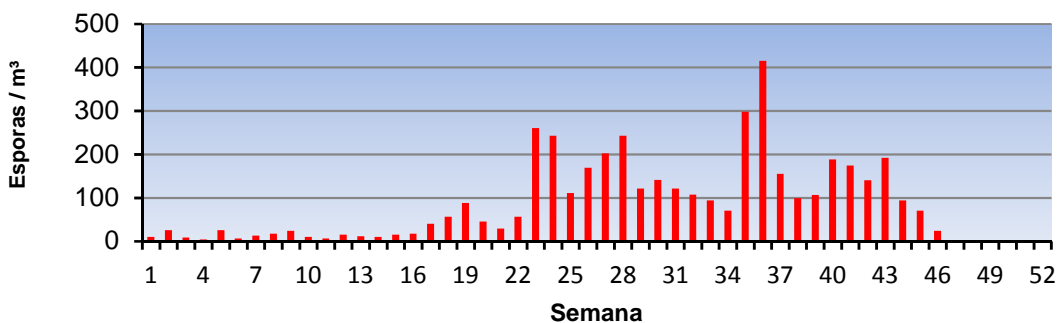
EVOLUCIÓN AEROPOLÍNICA ANUAL



EVOLUCIÓN SEMANAL DE ALTERNARIA



EVOLUCIÓN ANUAL DE ALTERNARIA



Punto de muestreo: Hospital Clínico de Valencia

Responsable: Francisco Javier Suárez Pérez